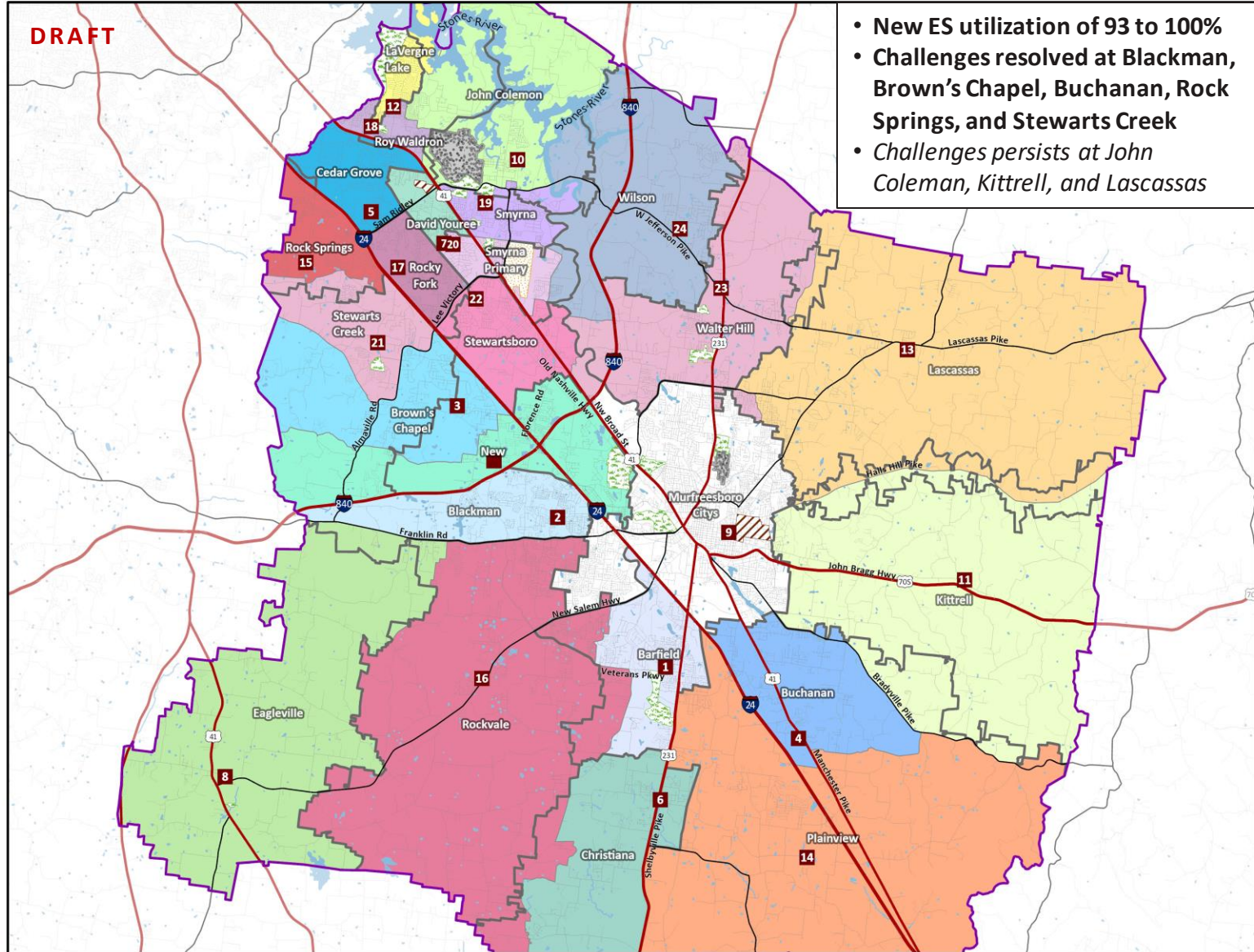


Concept 1: Elementary Zoning Map

Concept 1: Elementary School Boundary Map

- Elementary Schools
- Middle Schools
- ◆ High Schools
- Magnet Schools
- ◆ Alternative Schools
- Airport
- College
- Parks and Golf Courses
- Nissan Plant
- Current ES Boundary
- New Elementary & Middle School

- Elementary Schools**
- 1 Barfield
 - 2 Blackman
 - 3 Browns Chapel
 - 4 Buchanan
 - 5 Cedar Grove
 - 6 Christiana
 - 7 David Youree
 - 8 Eagleville
 - 9 Homer Pittard Campus
 - 10 John Coleman
 - 11 Kittrell
 - 12 La Vergne Lake
 - 13 Lascassas
 - 14 Plainview
 - 15 Rock Springs
 - 16 Rockvale
 - 17 Rocky Fork
 - 18 Roy Waldron
 - 19 Smyrna
 - 20 Smyrna Primary
 - 21 Stewarts Creek
 - 22 Stewartsboro
 - 23 Walter Hill
 - 24 Wilson
- * Murfreesboro Citys



Map data provided by Rutherford County Schools, Cities of Eagleville, La Vergne, Murfreesboro, and Smyrna, Rutherford County, State of Tennessee, and ESRI/GIS.
 Map created by RSP & Associates in August 2023.

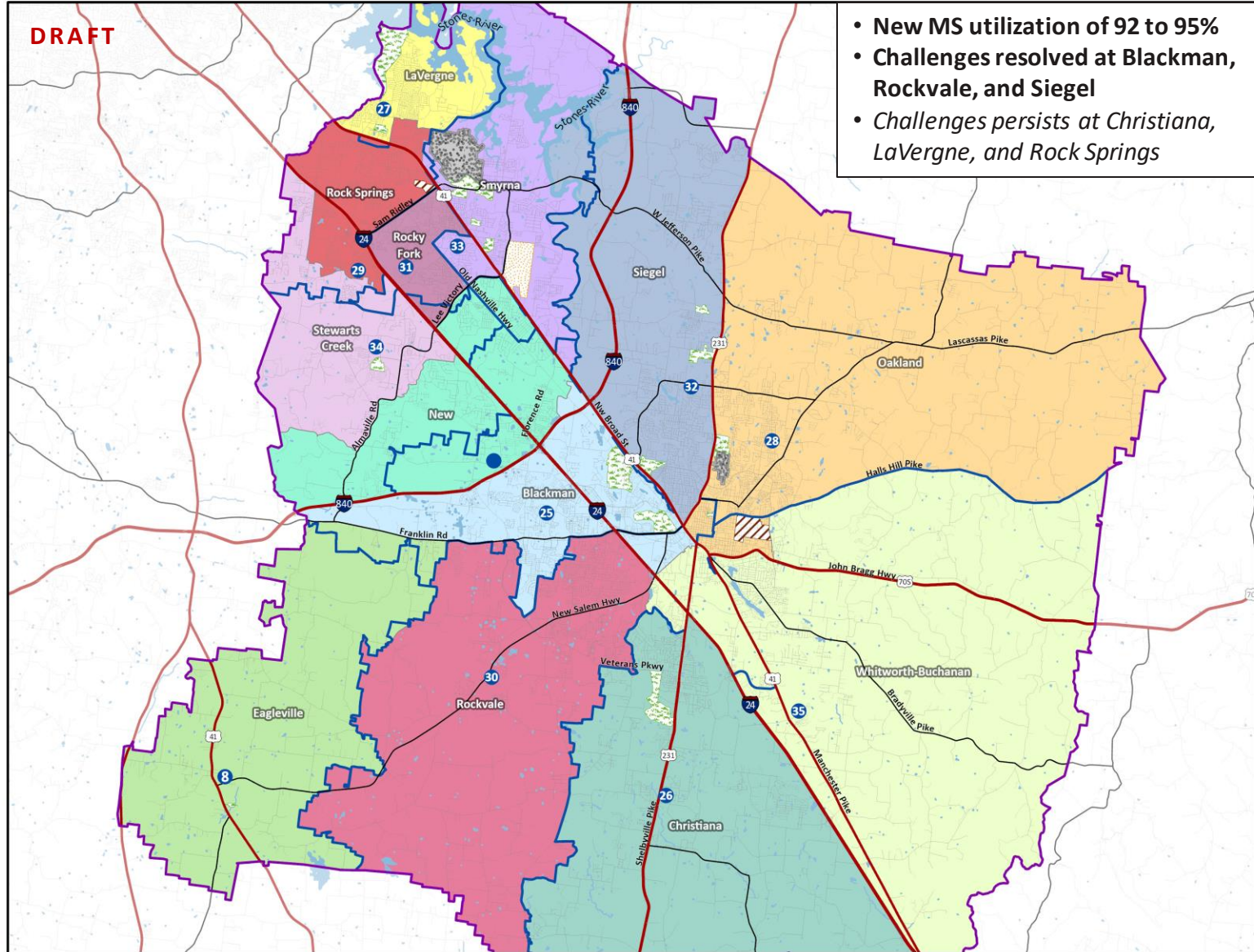
Elementary attendance zone change implemented in 2025/26 (when new ES opens)

Concept 1: Middle School Zoning Map

Concept 1: Middle School Boundary Map

- Elementary Schools
- Middle Schools
- ◆ High Schools
- Magnet Schools
- ◆ Alternative Schools
- Airport
- College
- Parks and Golf Courses
- Nissan Plant
- Current MS Boundary
- New Elementary & Middle School

- Middle Schools**
- 25 Blackman
 - 26 Christiana
 - 8 Eagleville
 - 27 La Vergne
 - 28 Oakland
 - 29 Rock Springs
 - 30 Rockvale
 - 31 Rocky Fork
 - 32 Siegel
 - 33 Smyrna
 - 34 Stewarts Creek
 - 35 Whitworth-Buchanan
- Magnet**
- 45 Central Magnet (6-12)
 - 47 Thurman Francis Arts Academy (K-8)
- Alternative**
- 48 Smyrna West Alternative (6-12)
 - 49 Daniel Mckee Alternative (6-12)



Map data provided by Rutherford County Schools, Cities of Eagleville, La Vergne, Murfreesboro, and Smyrna, Rutherford County, State of Tennessee, and ESRI/GIS.
Map created by RSP & Associates in August 2023.

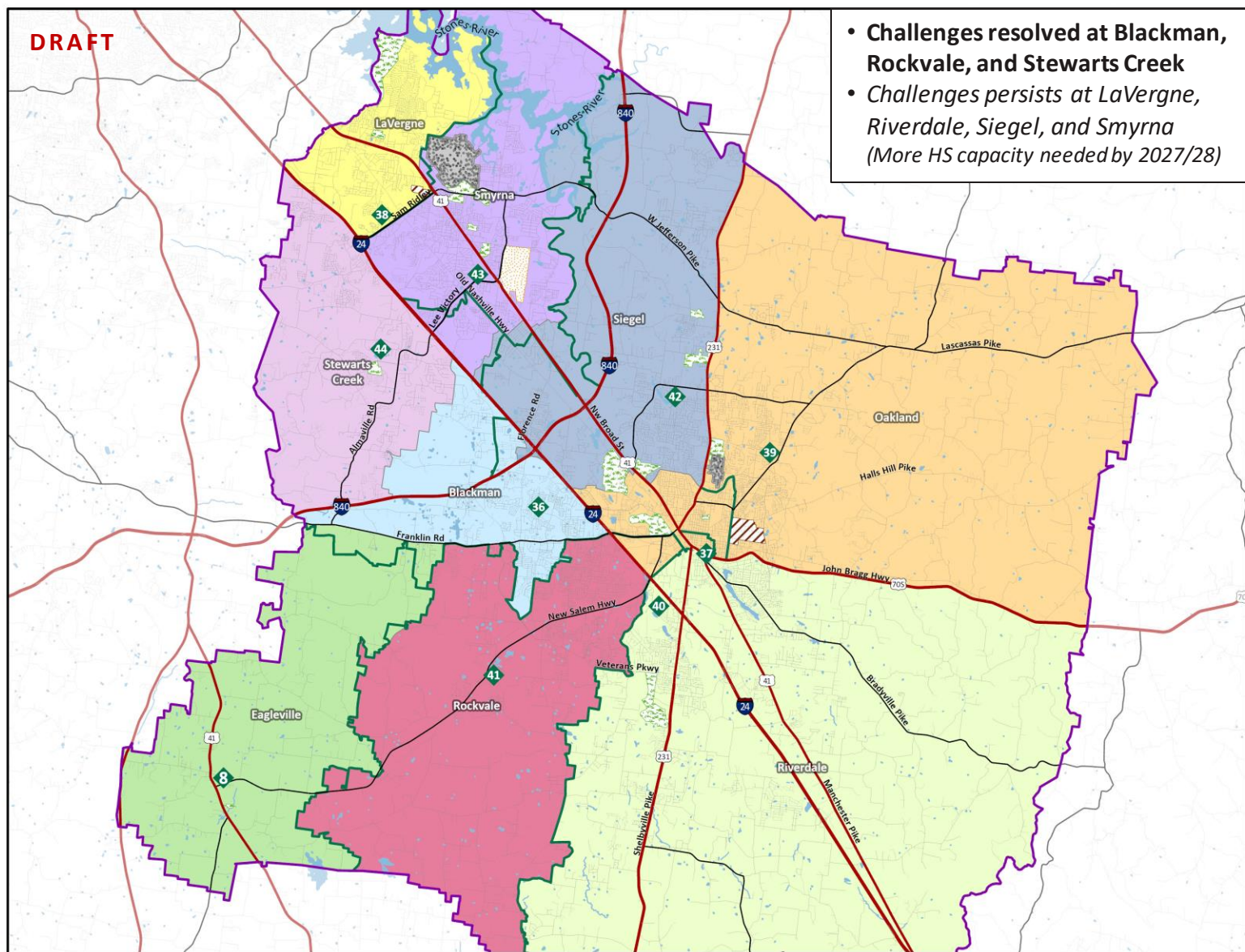
Middle school attendance zone change implemented in 2026/27 (when new MS opens)

Concept 1: High School Zoning Map

Concept 1: High School Boundary Map

- Elementary Schools
- Middle Schools
- ◆ High Schools
- Magnet Schools
- ◆ Alternative Schools
- Airport
- College
- Parks and Golf Courses
- Nissan Plant
- Current HS Boundary

- High Schools**
- 36 Blackman
 - 8 Eagleville
 - 37 Holloway
 - 38 La Vergne
 - 39 Oakland
 - 40 Riverdale
 - 41 Rockvale
 - 42 Siegel
 - 43 Smyrna
 - 44 Stewarts Creek
- Magnet**
- 45 Central Magnet (6-12)
- Alternative**
- 48 Smyrna West Alternative (6-12)
 - 49 Daniel Mckee Alternative (6-12)



- Challenges resolved at Blackman, Rockvale, and Stewarts Creek
- Challenges persists at La Vergne, Riverdale, Siegel, and Smyrna (More HS capacity needed by 2027/28)

Map data provided by Rutherford County Schools, Cities of Eagleville, La Vergne, Murfreesboro, and Smyrna, Rutherford County, State of Tennessee, and ESRI/GIS.
Map created by RSP & Associates in August 2023.

High school attendance zone change implemented in 2025/26 (when building additions are complete)

Concept 1 Zoning Projections

Concept #1: Elementary Reside Projections	Functional Capacity	Concept #1 Zoning Enrollment					
		2025/26		2026/27		2027/28	
		#	%	#	%	#	%
Barfield Elementary	1,020	844	83%	852	84%	851	83%
Blackman Elementary	1,072	1,067	100%	1,074	100%	1,051	98%
Brown's Chapel Elementary	835	749	90%	767	92%	775	93%
Buchanan Elementary	528	519	98%	532	101%	530	100%
Cedar Grove Elementary	942	835	89%	860	91%	865	92%
Christiana Elementary	747	672	90%	687	92%	697	93%
David Youree Elementary	853	783	92%	763	89%	765	90%
Eagleville Elementary	432	332	77%	332	77%	332	77%
John Coleman Elementary	920	958	104%	981	107%	953	104%
Kittrell Elementary	410	415	101%	419	102%	437	107%
Lascassas Elementary	665	672	101%	687	103%	695	105%
LaVergne Lake Elementary	1,060	926	87%	954	90%	950	90%
New Elementary	1,100	1,023	93%	1,066	97%	1,108	101%
Plainview Elementary	1,120	587	52%	601	54%	599	53%
Rock Springs Elementary	1,265	1,030	81%	1,050	83%	1,050	83%
Rockvale Elementary	1,585	1,165	74%	1,187	75%	1,229	78%
Rocky Fork Elementary	990	937	95%	911	92%	900	91%
Roy Waldron Elementary	895	813	91%	859	96%	881	98%
Smyrna Elementary	816	771	94%	763	94%	758	93%
Smyrna Primary	625	605	97%	616	99%	612	98%
Stewarts Creek Elementary	1,173	855	73%	872	74%	928	79%
Stewartsboro Elementary	855	773	90%	773	90%	767	90%
Walter Hill Elementary	690	608	88%	610	88%	602	87%
Wilson Elementary	885	666	75%	671	76%	681	77%
Total Facility	21,483	18,606	87%	18,887	88%	19,016	89%

Source: Rutherford County Schools, and RSP SFM, 2022/23

Note: Orange shading indicates when projected enrollment exceeds functional capacity (>100%). Projections are based on student reside and then adjusted for special programming facilities. Only schools with attendance zones are included on the tables.

Concept #1: Middle School Reside Projections	Functional Capacity	Concept #1 Zoning Enrollment			
		2026/27		2027/28	
		#	%	#	%
Blackman Middle	1,568	1,413	90%	1,430	91%
Christiana Middle	1,108	1,146	103%	1,160	105%
Eagleville Middle	362	179	50%	190	53%
LaVergne Middle	1,296	1,512	117%	1,589	123%
New Middle	1,200	1,093	91%	1,121	93%
Oakland Middle	1,244	1,148	92%	1,192	96%
Rock Springs Middle	1,109	1,132	102%	1,190	107%
Rockvale Middle	1,470	1,467	100%	1,434	98%
Rocky Fork Middle	937	923	99%	955	102%
Siegel Middle	1,246	1,181	95%	1,165	93%
Smyrna Middle	1,090	940	86%	1,003	92%
Stewarts Creek Middle	1,077	1,055	98%	1,084	101%
Whitworth-Buchanan Middle	959	937	98%	966	101%
Total Facility	14,666	14,126	96%	14,479	99%

Source: Rutherford County Schools, and RSP SFM, 2022/23

Concept #1: High School Reside Projections	Functional Capacity	Concept #1 Zoning Enrollment					
		2025/26		2026/27		2027/28	
		#	%	#	%	#	%
Blackman High	2,189	2,086	95%	2,090	95%	2,135	98%
Eagleville High	542	252	46%	247	46%	241	44%
LaVergne High	2,119	2,449	116%	2,700	127%	2,994	141%
Oakland High	2,500	2,322	93%	2,300	92%	2,279	91%
Riverdale High	2,500	2,538	102%	2,558	102%	2,663	107%
Rockvale High	2,204	2,151	98%	2,144	97%	2,221	101%
Siegel High	2,049	2,185	107%	2,258	110%	2,377	116%
Smyrna High	2,500	2,613	105%	2,615	105%	2,730	109%
Stewarts Creek High	2,338	2,123	91%	2,318	99%	2,491	107%
Total Facility	18,941	18,719	99%	19,230	102%	20,131	106%

Source: Rutherford County Schools, and RSP SFM, 2022/23

Main Takeaway:

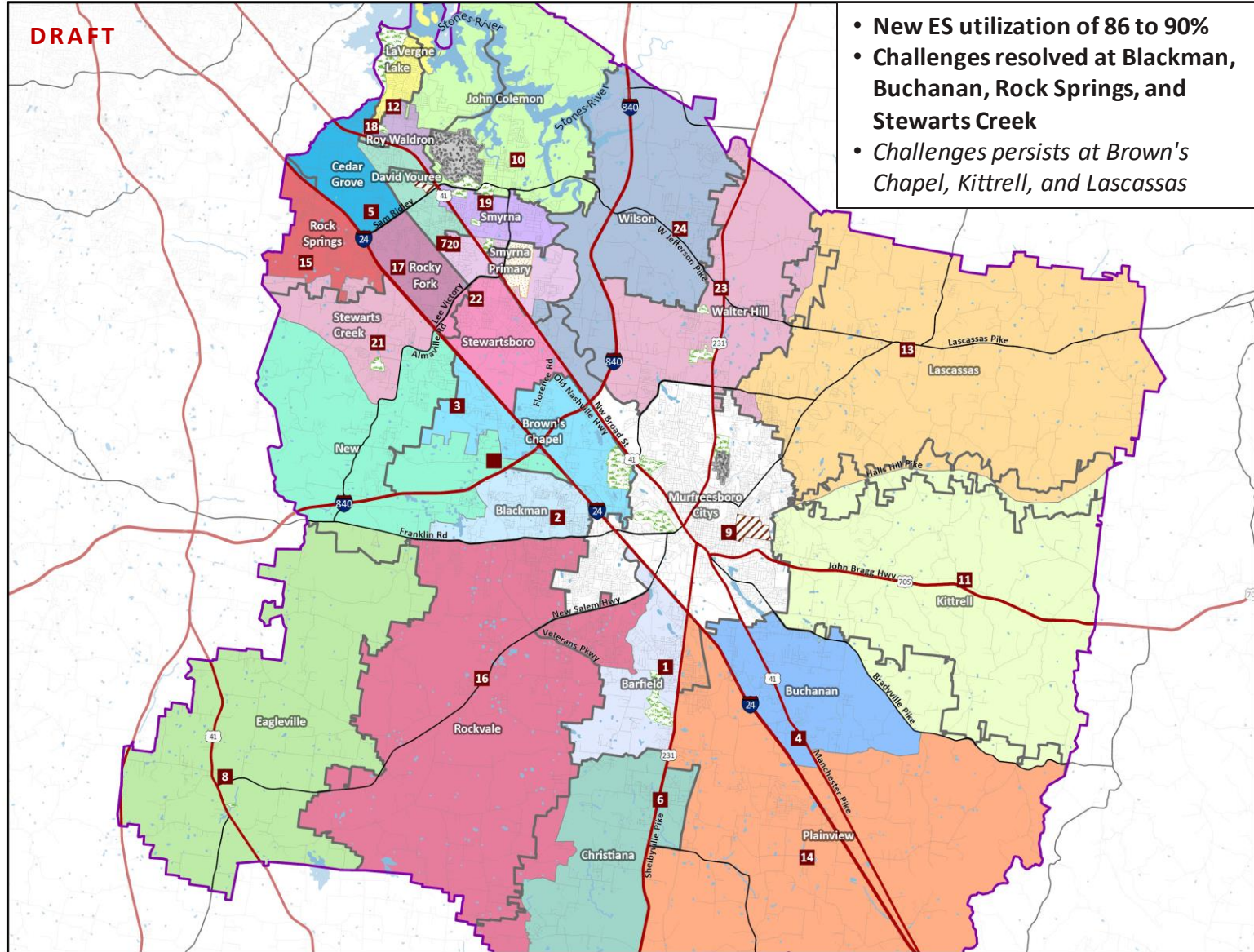
- Stewarts Creek Campus challenges are improved (Elementary, Middle, & High School)
- Blackman Campus challenges are improved (Middle & High School)
- Roy Waldron Annex is repurposed for other district programming need
- Plans for new elementary and middle school facilities and High School building additions

Concept 2: Elementary Zoning Map

Concept 2: Elementary School Boundary Map

- Elementary Schools
- Middle Schools
- ◆ High Schools
- Magnet Schools
- ◆ Alternative Schools
- Airport
- College
- Parks and Golf Courses
- Nissan Plant
- Current ES Boundary
- New Elementary & Middle School

- Elementary Schools**
- 1 Barfield
 - 2 Blackman
 - 3 Browns Chapel
 - 4 Buchanan
 - 5 Cedar Grove
 - 6 Christiana
 - 7 David Youree
 - 8 Eagleville
 - 9 Homer Pittard Campus
 - 10 John Coleman
 - 11 Kittrell
 - 12 La Vergne Lake
 - 13 Lascassas
 - 14 Plainview
 - 15 Rock Springs
 - 16 Rockvale
 - 17 Rocky Fork
 - 18 Roy Waldron
 - 19 Smyrna
 - 20 Smyrna Primary
 - 21 Stewarts Creek
 - 22 Stewartsboro
 - 23 Walter Hill
 - 24 Wilson
- * Murfreesboro Citys



- New ES utilization of 86 to 90%
- Challenges resolved at Blackman, Buchanan, Rock Springs, and Stewarts Creek
- Challenges persists at Brown's Chapel, Kittrell, and Lascassas

Map data provided by Rutherford County Schools, Cities of Eagleville, La Vergne, Murfreesboro, and Smyrna, Rutherford County, State of Tennessee, and ESRI/GIS.
 Map created by RSP & Associates in August 2023.

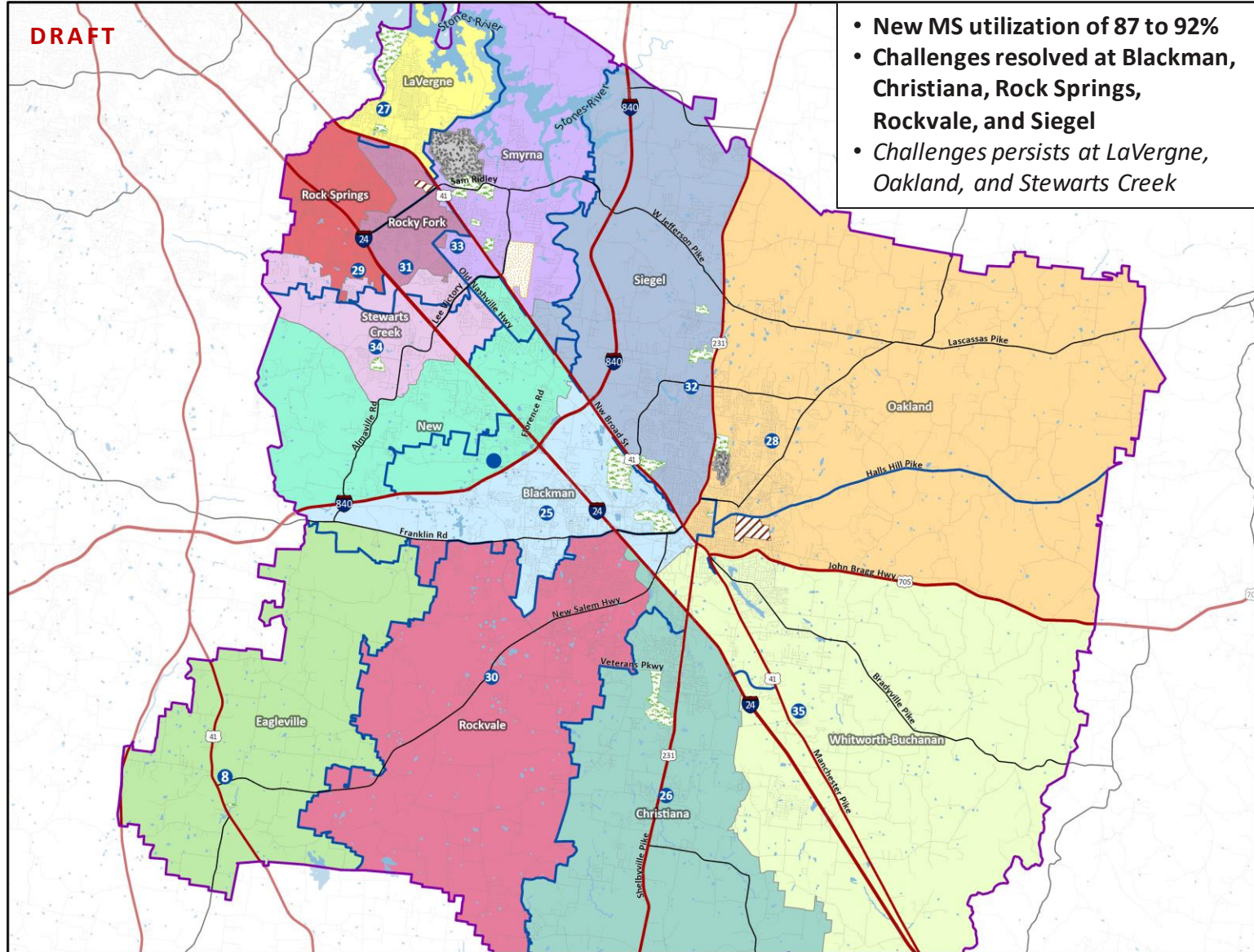
Elementary attendance zone change implemented in 2025/26 (when new ES opens)

Concept 2: Middle School Zoning Map

Concept 2: Middle School Boundary Map

- Elementary Schools
- Middle Schools
- ◆ High Schools
- Magnet Schools
- ◆ Alternative Schools
- Airport
- College
- Parks and Golf Courses
- Nissan Plant
- Current MS Boundary
- New Elementary & Middle School

- Middle Schools**
- 25 Blackman
 - 26 Christiana
 - 8 Eagleville
 - 27 La Vergne
 - 28 Oakland
 - 29 Rock Springs
 - 30 Rockvale
 - 31 Rocky Fork
 - 32 Siegel
 - 33 Smyrna
 - 34 Stewarts Creek
 - 35 Whitworth-Buchanan
- Magnet**
- 45 Central Magnet (6-12)
 - 47 Thurman Francis Arts Academy (K-8)
- Alternative**
- 48 Smyrna West Alternative (6-12)
 - 49 Daniel Mckee Alternative (6-12)



- New MS utilization of 87 to 92%
- Challenges resolved at Blackman, Christiana, Rock Springs, Rockvale, and Siegel
- Challenges persists at LaVergne, Oakland, and Stewarts Creek

Map data provided by Rutherford County Schools, Cities of Eagleville, La Vergne, Murfreesboro, and Smyrna, Rutherford County, State of Tennessee, and ESRI/GIS.
Map created by RSP & Associates in August 2023.

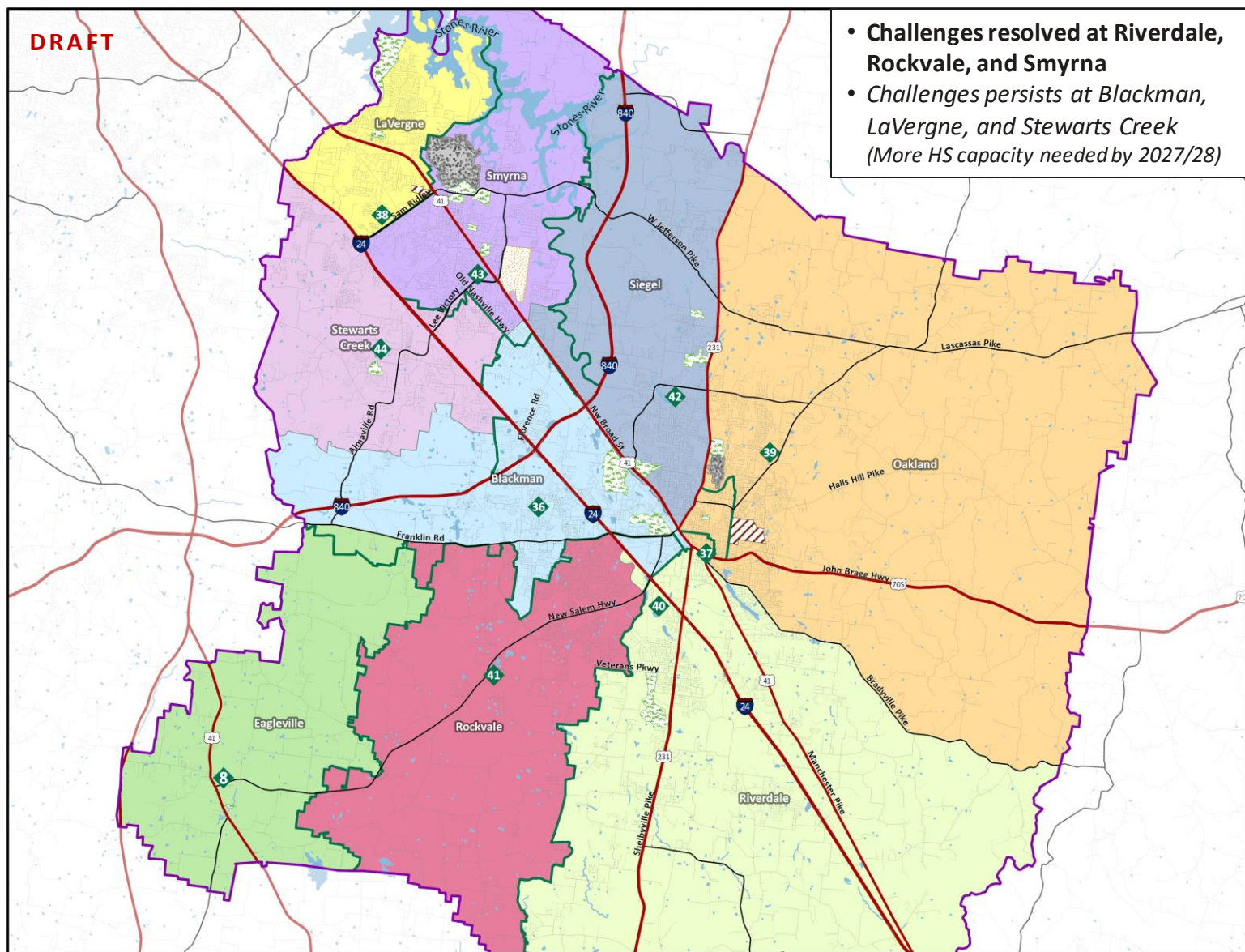
Middle school attendance zone change implemented in 2026/27 (when new MS opens)

Concept 2: High School Zoning Map

Concept 2: High School Boundary Map

- Elementary Schools
- Middle Schools
- ◆ High Schools
- Magnet Schools
- ◆ Alternative Schools
- Airport
- College
- Parks and Golf Courses
- Nissan Plant
- Current HS Boundary

- High Schools**
- 36 Blackman
 - 8 Eagleville
 - 37 Holloway
 - 38 La Vergne
 - 39 Oakland
 - 40 Riverdale
 - 41 Rockvale
 - 42 Siegel
 - 43 Smyrna
 - 44 Stewarts Creek
- Magnet**
- 45 Central Magnet (6-12)
- Alternative**
- 48 Smyrna West Alternative (6-12)
 - 49 Daniel Mckee Alternative (6-12)



- Challenges resolved at Riverdale, Rockvale, and Smyrna
- Challenges persists at Blackman, LaVergne, and Stewarts Creek (More HS capacity needed by 2027/28)

Map data provided by Rutherford County Schools, Cities of Eagleville, La Vergne, Murfreesboro, and Smyrna, Rutherford County, State of Tennessee, and ESRI/GIS.
Map created by RSP & Associates in August 2023.

High school attendance zone change implemented in 2025/26 (when building additions are complete)

Concept 2 Zoning Projections

Concept #2: Elementary Reside Projections	Functional Capacity	Concept #2 Zoning Enrollment					
		2025/26		2026/27		2027/28	
		#	%	#	%	#	%
Barfield Elementary	1,020	681	67%	671	66%	673	66%
Blackman Elementary	1,072	991	92%	1,001	93%	980	91%
Brown's Chapel Elementary	835	900	108%	943	113%	958	115%
Buchanan Elementary	528	519	98%	532	101%	530	100%
Cedar Grove Elementary	942	855	91%	889	94%	890	94%
Christiana Elementary	747	672	90%	687	92%	696	93%
David Youree Elementary	853	836	98%	818	96%	823	96%
Eagleville Elementary	432	311	72%	313	72%	313	72%
John Colemon Elementary	920	910	99%	935	102%	909	99%
Kittrell Elementary	410	415	101%	419	102%	437	107%
Lascassas Elementary	665	672	101%	687	103%	695	105%
LaVergne Lake Elementary	1,060	926	87%	954	90%	950	90%
New Elementary	1,100	949	86%	964	88%	997	91%
Plainview Elementary	1,120	693	62%	717	64%	712	64%
Rock Springs Elementary	1,265	1,082	86%	1,102	87%	1,104	87%
Rockvale Elementary	1,585	1,242	78%	1,272	80%	1,311	83%
Rocky Fork Elementary	990	937	95%	911	92%	900	91%
Roy Waldron Elementary	895	843	94%	886	99%	904	101%
Smyrna Elementary	816	814	100%	805	99%	799	98%
Smyrna Primary	625	593	95%	601	96%	602	96%
Stewarts Creek Elementary	1,173	736	63%	760	65%	810	69%
Stewartsboro Elementary	855	721	84%	719	84%	715	84%
Walter Hill Elementary	690	572	83%	573	83%	565	82%
Wilson Elementary	885	669	76%	674	76%	677	76%
Total	22,664	18,540	86%	18,833	88%	18,951	88%

Source: Rutherford County Schools, and RSP SFM, 2022/23

Note: Orange shading indicates when projected enrollment exceeds functional capacity (>100%). Projections are based on student reside and then adjusted for special programming facilities. Only schools with attendance zones are included on the tables.

Concept #2: Middle School Reside Projections	Functional Capacity	Concept #2 Zoning Enrollment			
		2026/27		2027/28	
		#	%	#	%
Blackman Middle	1,568	1,413	90%	1,430	91%
Christiana Middle	1,108	1,102	99%	1,114	101%
Eagleville Middle	362	169	47%	180	50%
LaVergne Middle	1,296	1,617	125%	1,704	131%
New Middle	1,200	1,053	88%	1,108	92%
Oakland Middle	1,244	1,298	104%	1,339	108%
Rock Springs Middle	1,109	956	86%	1,043	94%
Rockvale Middle	1,470	1,477	100%	1,445	98%
Rocky Fork Middle	937	912	97%	938	100%
Siegel Middle	1,246	1,196	96%	1,188	95%
Smyrna Middle	1,090	970	89%	1,030	94%
Stewarts Creek Middle	1,077	1,131	105%	1,094	102%
Whitworth-Buchanan Middle	959	831	87%	868	91%
Total Facility	14,666	14,125	96%	14,481	99%

Source: Rutherford County Schools, and RSP SFM, 2022/23

Concept #2: High School Reside Projections	Functional Capacity	Concept #2 Zoning Enrollment					
		2025/26		2026/27		2027/28	
		#	%	#	%	#	%
Blackman High	2,189	2,789	127%	2,825	129%	2,935	134%
Eagleville High	542	242	45%	237	44%	229	42%
LaVergne High	2,119	2,449	116%	2,700	127%	2,994	141%
Oakland High	2,500	2,449	98%	2,430	97%	2,418	97%
Riverdale High	2,500	2,047	82%	2,068	83%	2,165	87%
Rockvale High	2,204	2,161	98%	2,154	98%	2,232	101%
Siegel High	2,049	1,815	89%	1,849	90%	1,916	94%
Smyrna High	2,500	2,258	90%	2,298	92%	2,407	96%
Stewarts Creek High	2,338	2,511	107%	2,669	114%	2,833	121%
Total Facility	18,941	18,721	99%	19,230	102%	20,129	106%

Source: Rutherford County Schools, and RSP SFM, 2022/23

Main Takeaway:

- ❑ Stewarts Creek Elementary challenges are improved; Middle & High School remain over-utilized
- ❑ Blackman Middle School challenges are improved; High School remains over-utilized
- ❑ Roy Waldron Annex is repurposed for other district programming need
- ❑ Plans for new elementary and middle school facilities and High School building additions

Concept Student Data Comparison/Discussion

Concept 1	Concept 2
<p>Challenges resolved at:</p> <p>Elementary</p> <ul style="list-style-type: none"> • Blackman • Brown’s Chapel • Buchanan • Rock Springs • Stewarts Creek <p>Middle School</p> <ul style="list-style-type: none"> • Blackman • Rockvale • Siegel 	<p>Challenges resolved at:</p> <p>Elementary:</p> <ul style="list-style-type: none"> • Blackman • Buchanan • Rock Springs • Stewarts Creek <p>Middle School</p> <ul style="list-style-type: none"> • Blackman • Christiana • Rockvale • Siegel
<p><i>Challenges persist at:</i></p> <p><i>Elementary</i></p> <ul style="list-style-type: none"> • John Coleman • Kittrell • Lascassas <p><i>Middle School</i></p> <ul style="list-style-type: none"> • Christiana • LaVergne • Rock Springs 	<p><i>Challenges persist at:</i></p> <p><i>Elementary</i></p> <ul style="list-style-type: none"> • Brown's Chapel • Kittrell • Lascassas <p><i>Middle School</i></p> <ul style="list-style-type: none"> • LaVergne • Oakland • Rock Springs
<ul style="list-style-type: none"> • High School capacity challenges persist at LaVergne, Riverdale, Siegel, and Smyrna high schools • More High School capacity is needed to fully resolve challenges • More K-2nd grade students impacted (17.4%) 	<ul style="list-style-type: none"> • High School capacity challenges persist at Blackman, LaVergne, and Stewarts Creek high schools • More High School capacity is needed to fully resolve challenges • Less K-2nd grade students impacted (14.8%)

Main Takeaway:

There are many differences between the concepts that may be positives or negatives depending on one’s lens. Neither concept is a long-term solution that solves all the utilization challenges in the district. **More facility space is needed at all levels to provide the best educational learning environment for students.**