

Planning for the Future

Media Meeting & Public Input Sessions
September 7, 18, 19, and 20th



AGENDA

Welcome (District Administration) 5 Minutes

Why are we here? (RSP) 10 Minutes

- *Community Growth Trends*
 - *Enrollment Projections*
 - *Facility Challenges and Building Capacity*
-

Process Overview (RSP) 10 Minutes

- *Timeline*
 - *Boundary Criteria*
 - *Guiding Principles*
 - *Board of Education Objectives*
 - *Challenges and Solutions*
-

Attendance Zone Concepts (RSP) 10 Minutes

- *Concept 1 Overview*
 - *Concept 2 Overview*
 - *Comparison of Concepts*
-

Public Input Participation (District Administration) 5 Minutes

- *Small Group Discussion Stations*
- *Electronic feedback via Survey*

Thank you all for coming!

RSP Quick Facts:

Founded in 2003
Professional educational planning firm
Expertise in multiple disciplines (GIS, Planning, Facilitation)
Over 20 years of planning experience
Over 80 years of education experience
Over 20 years of GIS experience
Projection accuracy of 97% or greater

RSP Clients:

RSP was started with the desire and commitment to assist school districts in long-range planning.
RSP has served over **130** clients in:

Arkansas	Minnesota	South Dakota
Colorado	Missouri	Tennessee
Iowa	Nebraska	Wisconsin
Illinois	North Dakota	
Kansas	Oklahoma	

RSP Planning Team:

Robert Schwarz, CEO

Military, County, City, and School District Planner
University of Kansas – Master of Urban Planning (MUP)
American Institute of Certified Planners (AICP)
Accredited Learning Environment Planner (ALEP)

Ginna Wallace, Planner

University of Kansas – Master of Urban Planning (MUP)
American Institute of Certified Planners (AICP)

RSP Recent Projects:

Clarksville Montgomery County School District

- Enrollment Analysis, 2021/22
- Boundary Analysis, 2021/22

Des Moines Public Schools

- Enrollment Analysis, 2022/23

Oklahoma City Public Schools

- Enrollment Analysis, 2021/22

Our Partners:



Part 2: Why are we here?

Sophisticated Forecast Model

Built-Out $S_{c,t,x} = S_{c-1,t-1,x} * GC$

Let:

- S = The number of students, either an actual count or a projected count
- x = A subscript denoting an attendance area in the School District
- c = Grade level
- t = Time (years)
- GC = Growth component either modeling enrollment increase or decrease based on historical information, expressed as a real number

Developing $S_{c,t,x} = S_{c-1,t-1,x} + (BP_{t,x} * R_{c,x})$

Where: $BP_{t,x} = \left(\frac{(CP_x)(BT_x)(A_x)}{\sum_x (CP_x)(BT_x)(A_x)} \right) * CT$

Let:

- S = The number of students, either an actual count or a projected count
- x = A subscript denoting an attendance area in School District
- c = Grade level
- t = Time (years)
- BP = Building permit forecast as given by the Building Permit Allocation Model (BPAM) model
- R_{c,x} = Student Enrollment ratio of cohort c in planning area x
- CP = Capacity of a planning area as expressed by available housing units
- BT = Building history trend of planning area
- A = An index which models the likelihood of development
- CT = Building permit control total forecast

This is the **central focus** of everything RSP does.

The model is based on what is happening in a school district. The best data is statistically analyzed to provide an accurate enrollment forecast. The District will be able to use RSP's report and maps to better understand demographic trends, school utilization, and the timing of construction projects.



The SFM is...

- a social science... not an exact science; it identifies behavior trends to determine the propensity of them to be recreated
- valuable in how our team created and analyzes the geography at a planning area level for any commonality which while help produce an accurate forecast

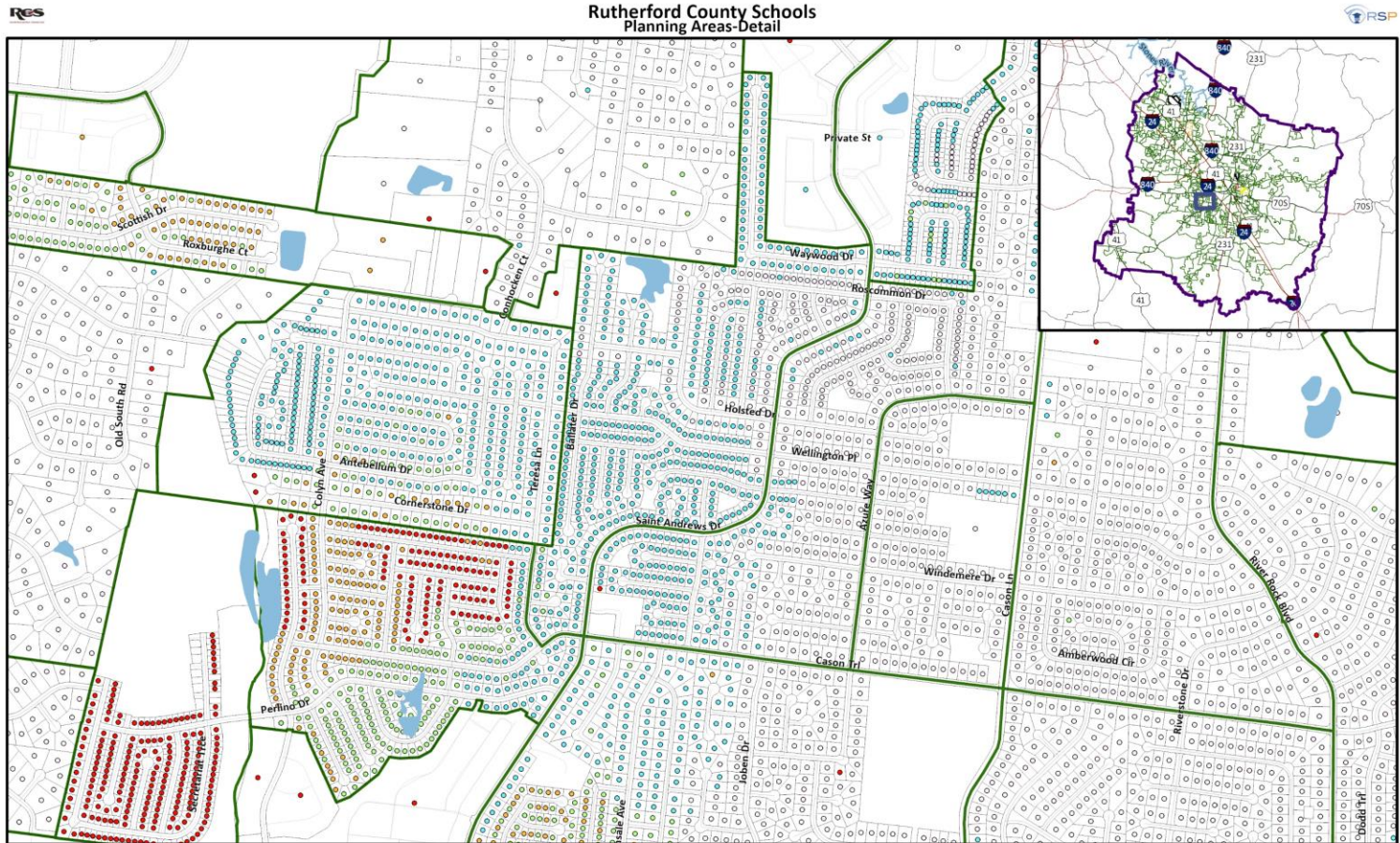
Some variables examined for each planning area (but not limited to) are...

- natural cohort (district data)
- planning area subdivision lifecycle (a RSP variable)
- the value of homes (county assessor data)
- type of residential units like single-family, multi-family, townhome, mobile home, etc. (county assessor data)
- year units were built
- estimated female population (census data)
- estimated 0-4 population (census data)
- existing land use (county and city data)
- future land use (county and city data)
- capital improvement plan (county and city data)
- future development (county and city data)
- in-migration of students (district data) & out-migration of students (district data)

Each variable is analyzed as an indicator of the future student population:

-  Indicator of Student Growth
-  Indicator of Student Loss

Planning Area Map



Map Details

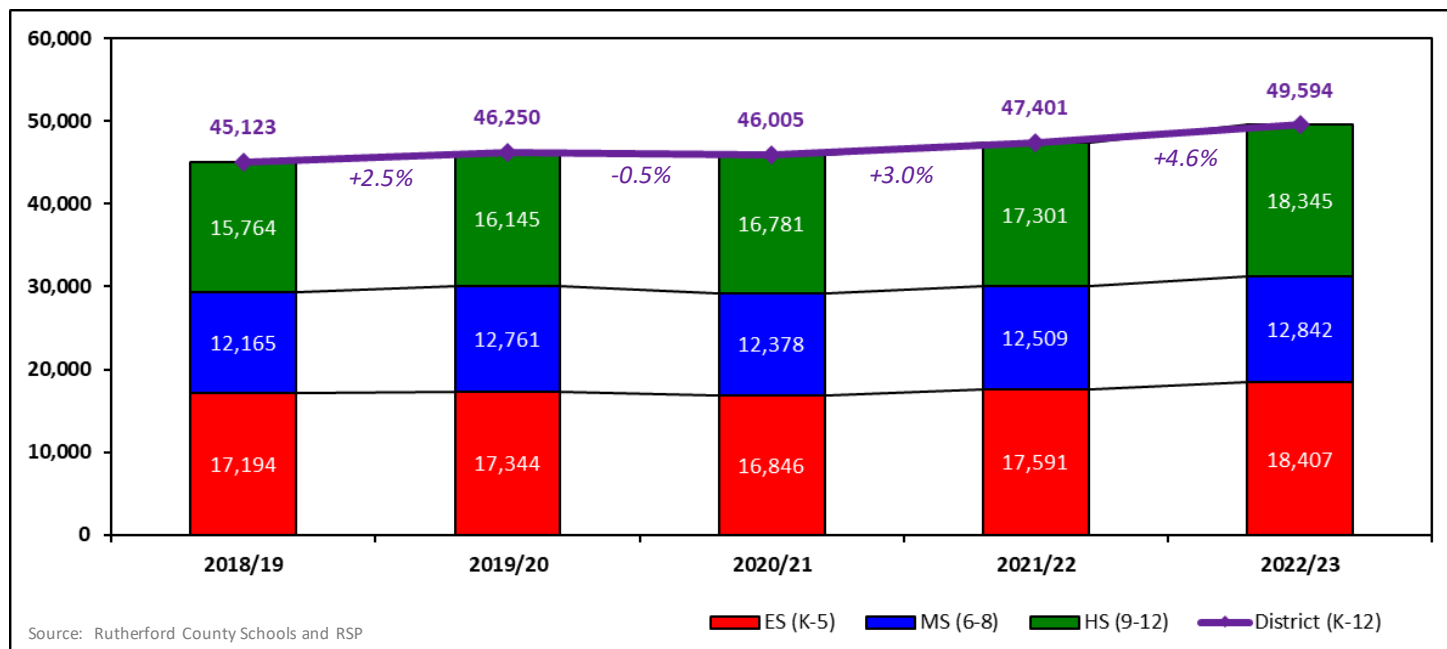
- District Boundary: **Purple Line**; Planning Areas: **Green Lines**
- Planning Areas are created from: Land Use, Residential Density, Natural Features, Manmade Features, Attendance Areas

Note: Statistically analyzing data with this number of geographic based polygons will provide a deeper context to how change is happening resulting in a reliable tool to make credible planning decisions. Each planning area had a different outlook based on indicators such as value of housing, square footage of housing unit, when the housing product was constructed, as well as access to amenities such as shopping, parks, trails, and roads.



Map data provided by Rutherford County Schools, Cities of Eagleville, La Vergne, Murfreesboro, and Smyrna, Rutherford County, State of Tennessee, and ESRI/GIS. Map created by RSP & Associates in November 2022.

Past Enrollment Growth



Enrollment Grade Change

From	To	PK	K	K 1st	1st 2nd	2nd 3rd	3rd 4th	4th 5th	5th 6th	6th 7th	7th 8th	8th 9th	9th 10th	10th 11th	11th 12th	K-12 Change		PK-12 Change	
																Change	Percent	Change	Percent
2018/19	2019/20	140	-2	-85	100	74	99	135	780	802	72	135	54	-33	-125	1,127	2.50%	1,267	2.77%
2019/20	2020/21	-107	-229	-189	-28	-12	-12	-24	520	593	21	72	55	-28	-132	-245	-0.53%	-352	-0.75%
2020/21	2021/22	-5	225	114	193	135	162	140	789	796	81	173	-68	-132	-97	1,396	3.03%	1,391	2.99%
2021/22	2022/23	89	58	97	171	188	200	183	917	767	199	317	182	124	-126	2,193	4.63%	2,282	4.76%
3-Yr Avg		-7.7	18.0	7.3	112.0	103.7	116.7	99.7	742.0	718.7	100.3	187.3	56.3	-12.0	-118.3	1114.7	2.38%	1107.0	2.33%
3-Yr Wavg		25	65.8	55	145.2	137	152	134.2	808.2	747.7	130	228.2	77.5	13.3	-117.3	1521	3.24%	1546	3.25%

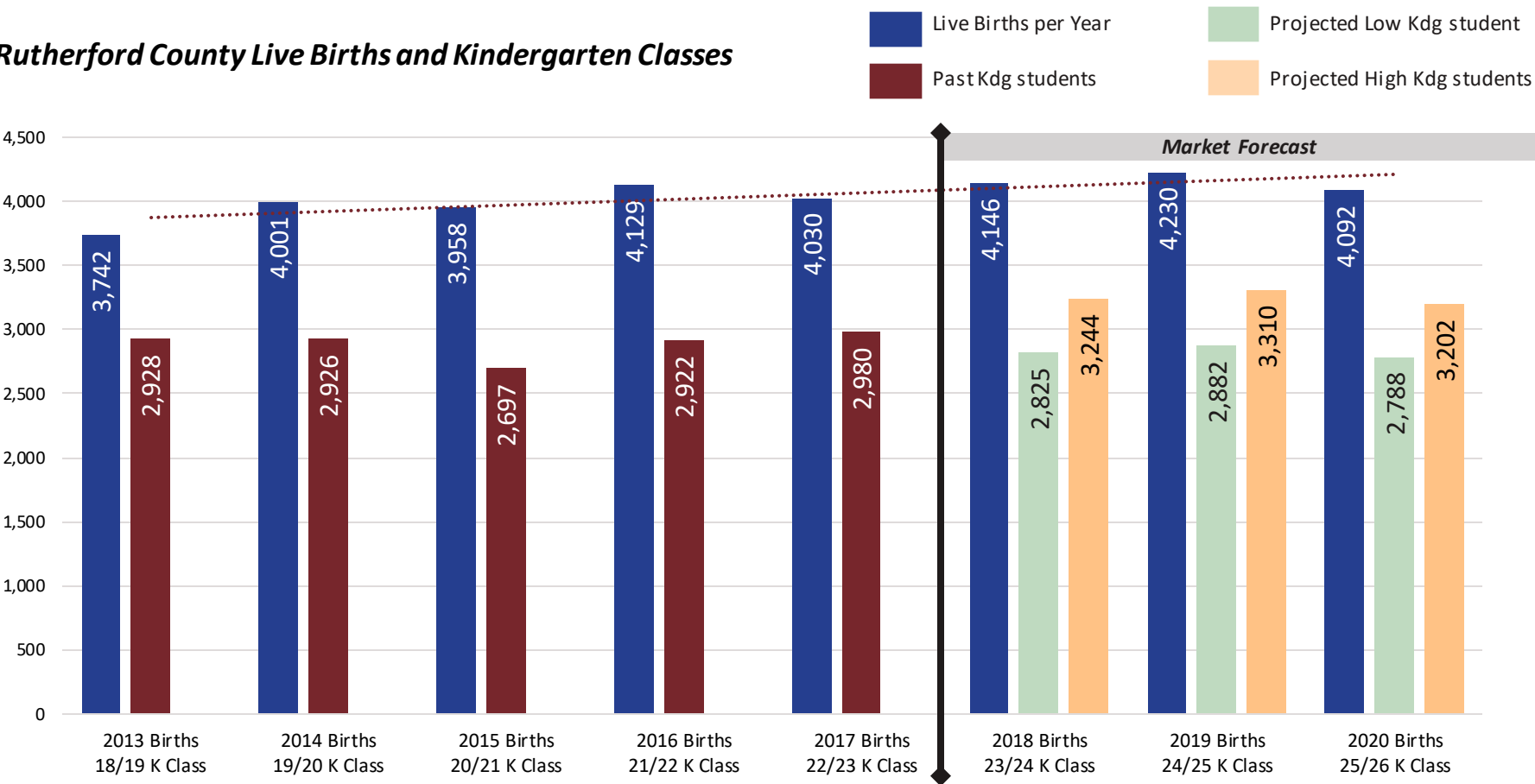
Source: Rutherford County Schools (2018/19 to 2022/23)

Main Takeaway:

2022/23 district enrollment increased by almost 5% from last year. All grades are the largest in history except for 8th grade. Most grade cohorts increase year to year (large cohort growth from 5th to 7th grade as Murfreesboro City Schools students merge with Rutherford County).

Rutherford County Live Birth Rate

Rutherford County Live Births and Kindergarten Classes



Source: Tennessee Department of Health and Rutherford County Schools

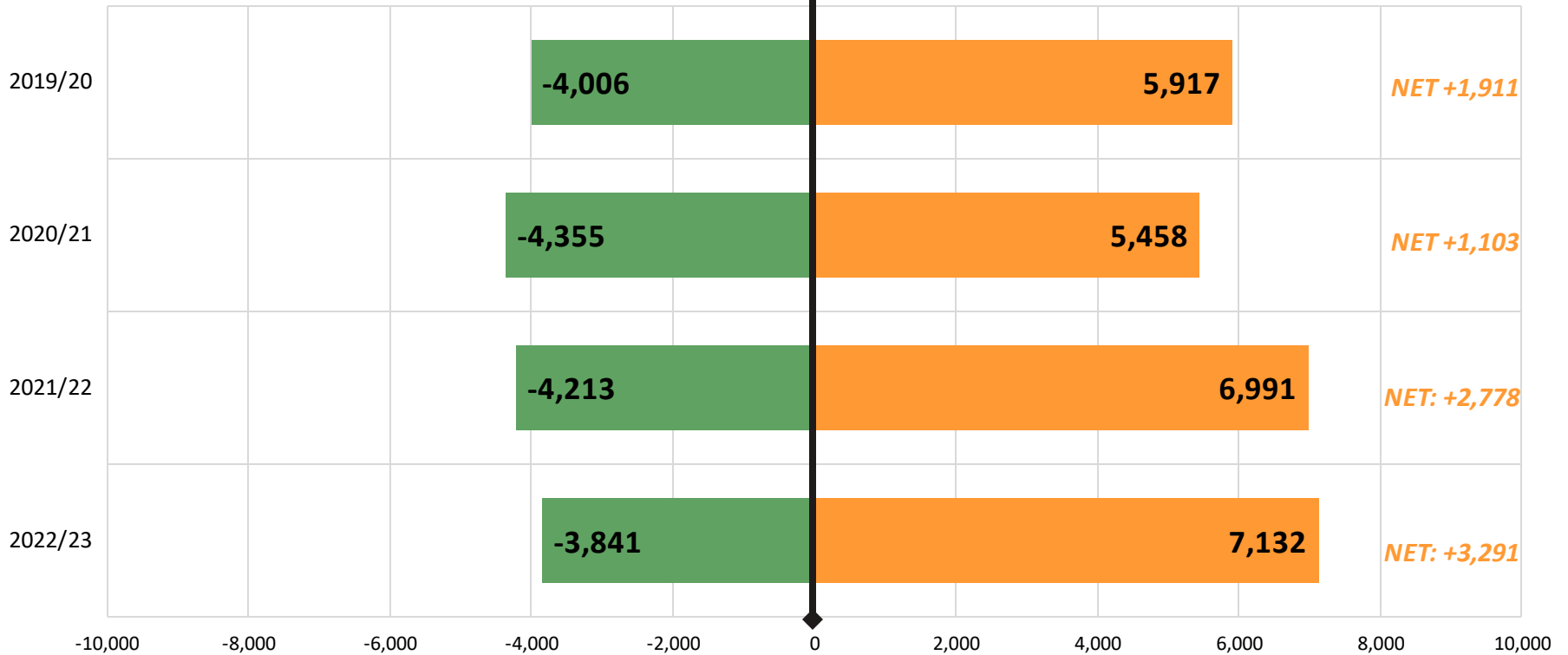
Main Takeaway:

Rutherford County live births have been relatively stable (3-year average of 21 more live births per year). The district enrolls 68% to 78% of county live births in kindergarten five years later. This variable indicates future kindergarten classes to be between 2,800 to 3,300 students over the next three years.

3-Year Student Migration Trend

Out-Migration
(students leaving the district)

In-Migration
(students entering the district)



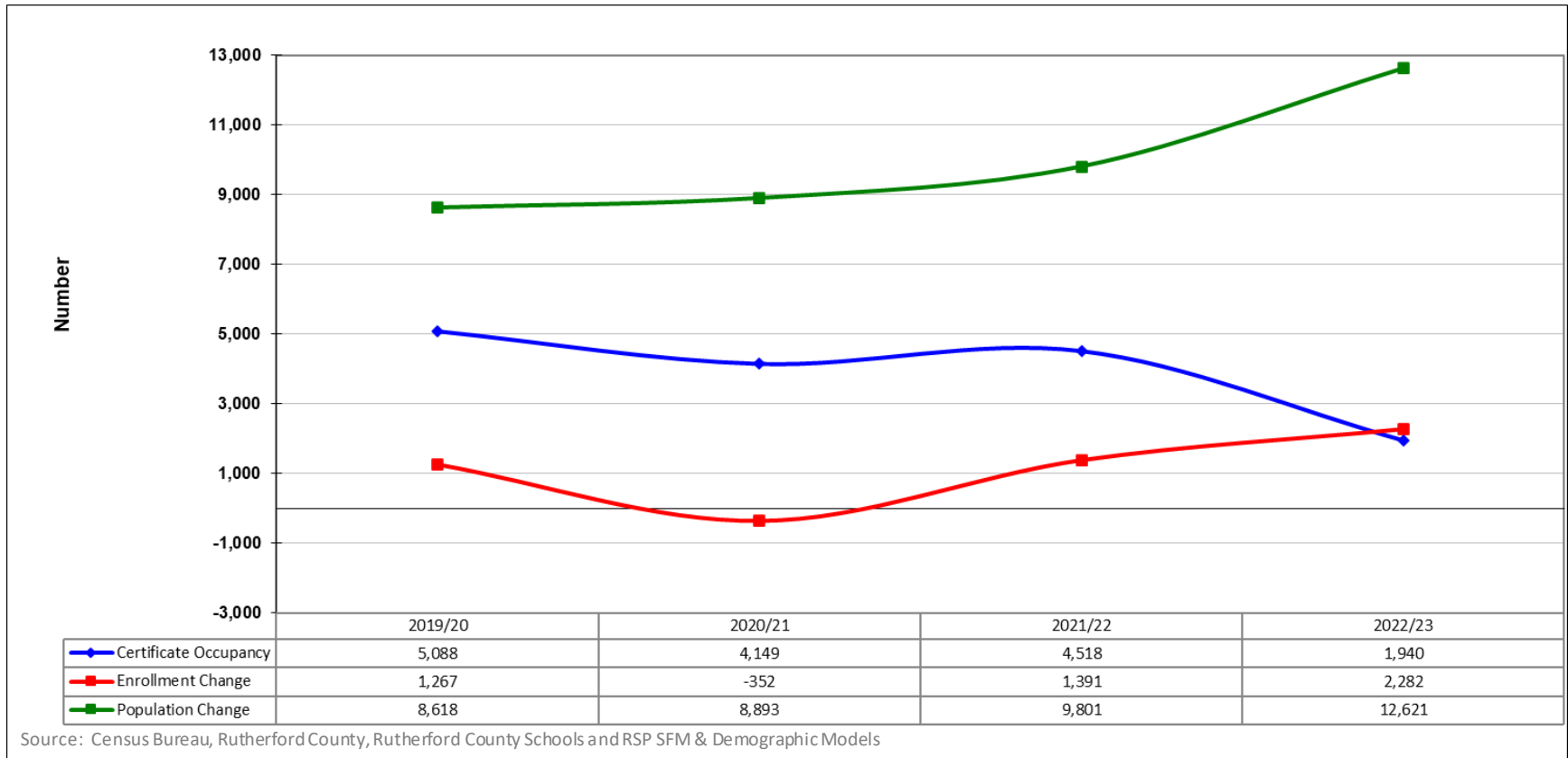
Source: Rutherford County Schools and RSP

Note: District migration includes all K-12 students (in-person, virtual, alternative). **Out-Migration** shows number of students in grades K to 11th that were attending the District in previous year but are not attending the District in current year. **In-Migration** shows number of students in grades 1st to 12th that are attending the District in current year but were not attending the District in previous year.

Main Takeaway:

The district tends to see more new students entering the district than previous student exiting the district indicating a continued growth of students throughout all grade levels.

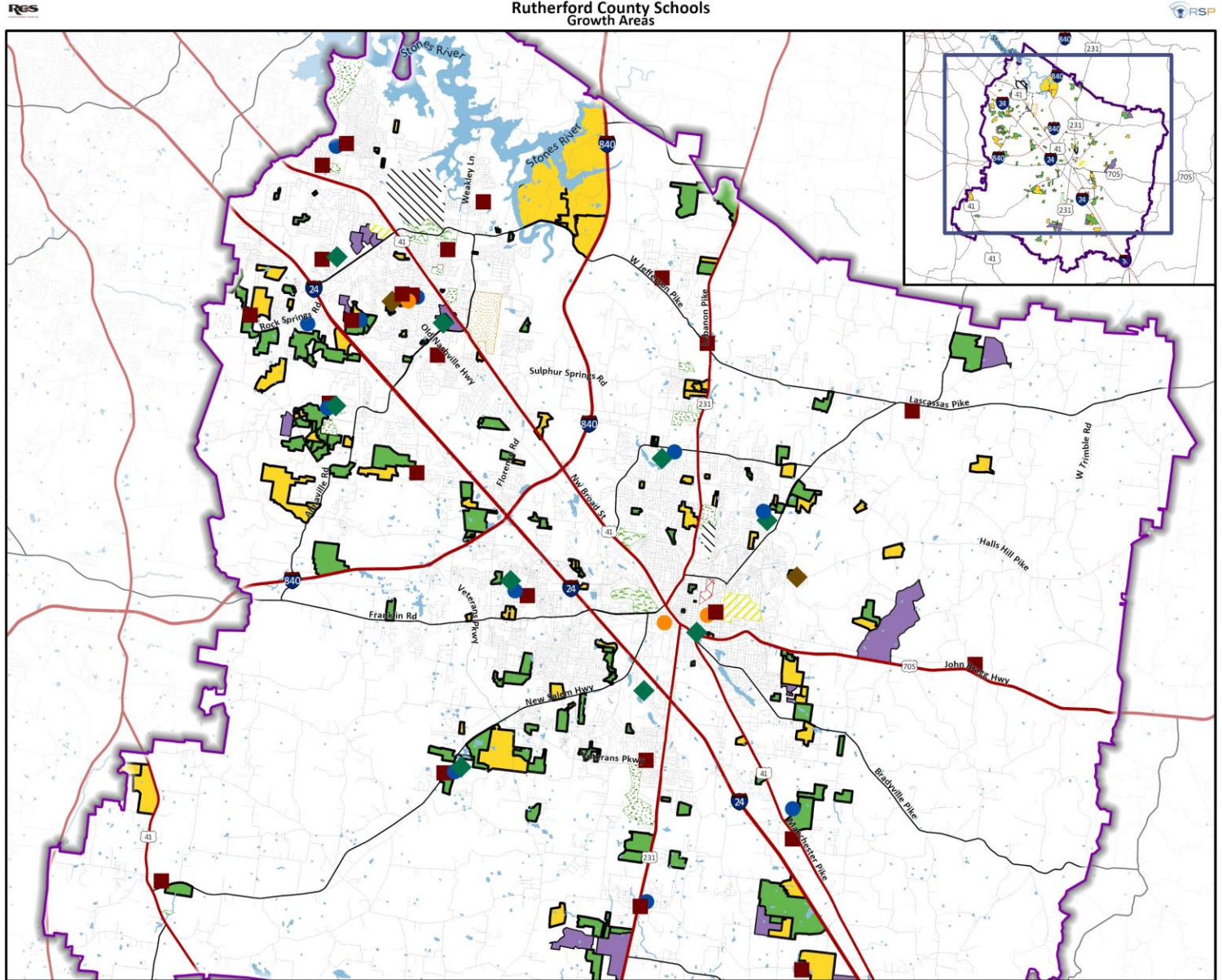
Population, Development, & Enrollment



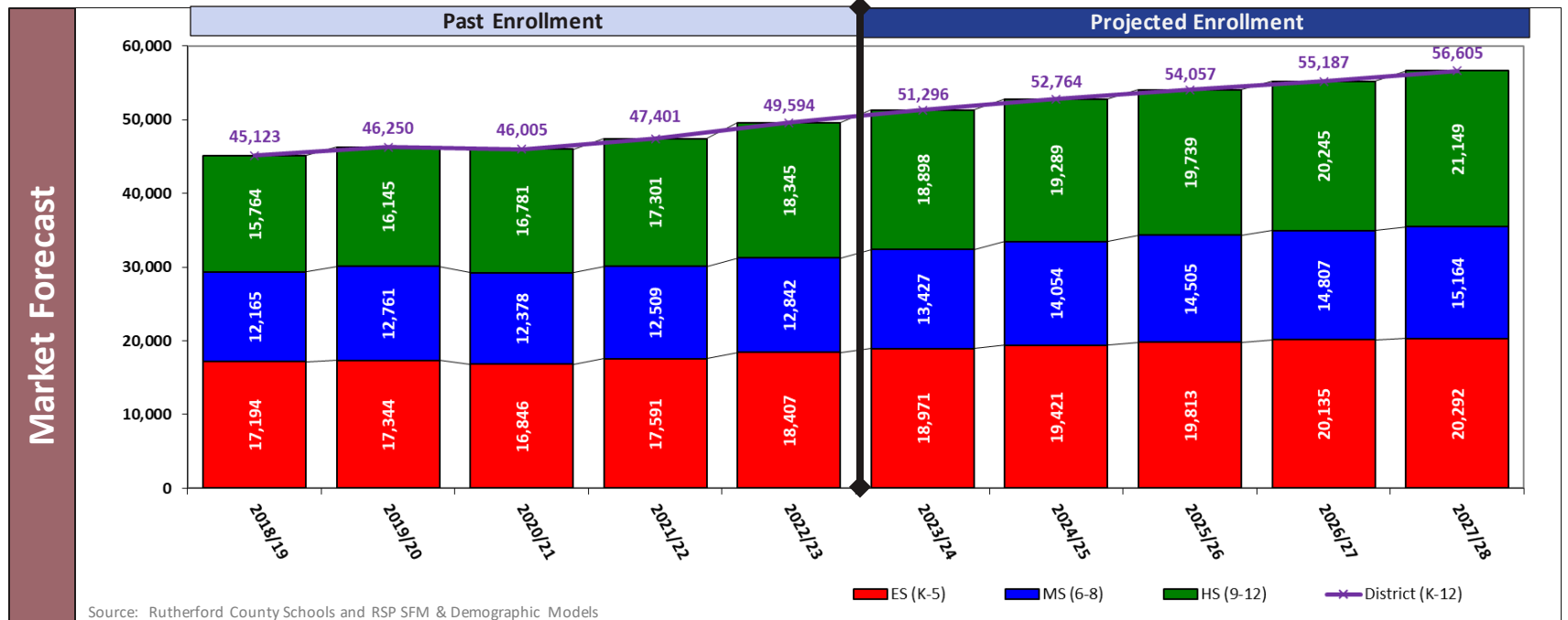
Main Takeaway:

As new housing activity (+4,000 new units a year) and total population (+10,000 people a year) increases, there is a correlation with student enrollment increasing. Both of these variables are forecasted to continue increasing over the next five years, indicating future enrollment growth.

Growth Area Map



Past, Current, & Future Enrollment



Greater share of future 6th and 7th grade students

Rutherford County Schools Enrollment Projections By School (Based on Student Reside)

School	Student Location	Past School Enrollment				Projections				
		2019/20	2020/21	2021/22	2022/23	2023/24	2024/25	2025/26	2026/27	2027/28
ELEMENTARY TOTAL K to 5th	Reside/Attend	13,256	13,607	14,652	16,290					
	Reside	17,344	16,847	17,593	18,408	18,971	19,421	19,813	20,135	20,292
	Attend	17,574	17,094	17,830	18,637	19,209	19,659	20,051	20,373	20,530
MIDDLE TOTAL 6th to 8th	Reside/Attend	10,388	10,492	10,858	11,692					
	Reside	12,759	12,375	12,507	12,841	13,427	14,054	14,505	14,807	15,164
	Attend	12,081	11,707	11,827	12,158	12,750	13,377	13,828	14,130	14,487
HIGH TOTAL 9th to 12th	Reside/Attend	12,748	14,129	14,961	16,124					
	Reside	16,147	16,783	17,301	18,345	18,898	19,289	19,739	20,245	21,149
	Attend	16,595	17,204	17,744	18,799	19,337	19,728	20,178	20,684	21,588
DISTRICT TOTALS K to 12th	Reside/Attend	36,392	38,228	40,471	44,106					
	Reside	46,250	46,005	47,401	49,594	51,296	52,764	54,057	55,187	56,605
	Attend	46,250	46,005	47,401	49,594	51,296	52,764	54,057	55,187	56,605

Source: RSP & Associates, LLC - November 2022

Main Takeaway

- ES: growth of almost 1,900 students
- MS: growth of over 2,300 students
- HS: growth of over 2,800 students
- District: growth of over 7,000 students (approx. 14% growth)

Elementary Heat Map and Attendance Zones

Elementary (K-5th) Student "Heat" Density by 2022/23 Elementary Attendance Zones

Legend

- Elementary Schools
- Middle Schools
- ◆ High Schools
- Magnet Schools
- ◆ Alternative Schools

Student Density

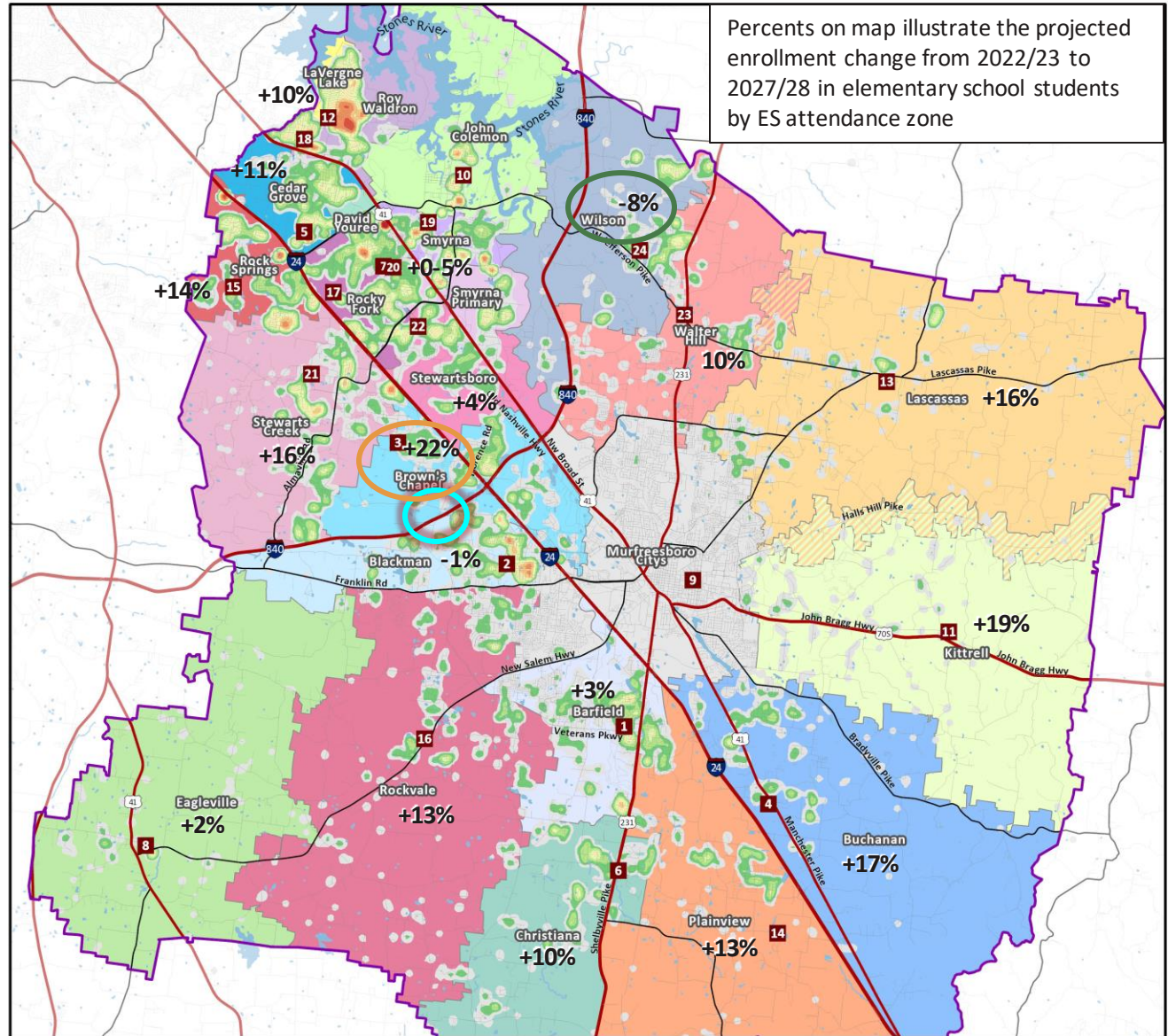
- Low Density
- High Density

- New ES
- Most growth
- Least growth

Elementary Schools

- 1 Barfield
- 2 Blackman
- 3 Browns Chapel
- 4 Buchanan
- 5 Cedar Grove
- 6 Christiana
- 7 David Youree
- 8 Eagleville
- 9 Homer Pittard Campus
- 10 John Coleman
- 11 Kittrell
- 12 La Vergne Lake
- 13 Lascassas
- 14 Plainview
- 15 Rock Springs
- 16 Rockvale
- 17 Rocky Fork
- 18 Roy Waldron
- 19 Smyrna
- 20 Smyrna Primery
- 21 Stewarts Creek
- 22 Stewartsboro
- 23 Walter Hill
- 24 Wilson

Percents on map illustrate the projected enrollment change from 2022/23 to 2027/28 in elementary school students by ES attendance zone



Note: New facilities are potential sites based on district property owned in this region.

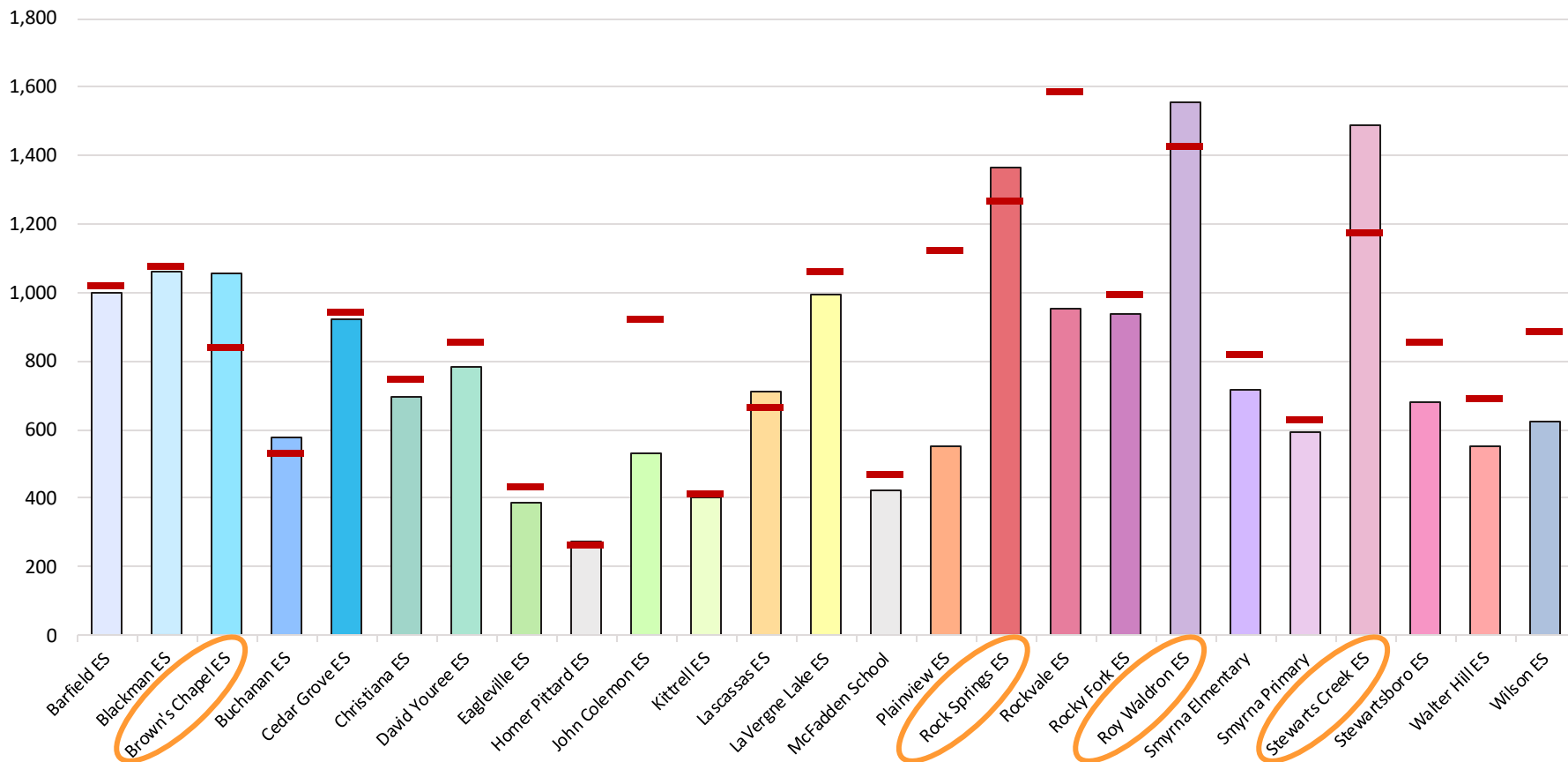
Map data provided by Rutherford County Schools, Cities of Eagleville, La Vergne, Murfreesboro, and Smyrna, Rutherford County, State of Tennessee, and ESRI/GIS.
Map created by RSP & Associates in June 2023.



Elementary Forecasted Capacity Challenges

2027/28 Attend Projections and Current Functional Building Capacity

█ RSP Functional Capacity



Source: RSP & Associates, LLC - November 2022 (Updated May 2023)

Main Takeaway: Schools on the northwest side of the district are forecasted to grow at a higher rate over the next five years. The new elementary school boundary should focus on relieving Brown's Chapel, Rock Springs, Roy Waldron, and Stewarts Creek elementary schools.

Middle School Heat Map and Attendance Zones

Middle School (6-8th) Student "Heat" Density by 2022/23 Middle School Attendance Zones

Legend

- Elementary Schools
- Middle Schools
- ◆ High Schools
- Magnet Schools
- ◆ Alternative Schools

Middle Schools

- 25 Blackman
- 26 Christiana
- 8 Eagleville
- 27 La Vergne
- 28 Oakland
- 29 Rock Springs
- 30 Rockvale
- 31 Rocky Fork
- 32 Siegel
- 33 Smyrna
- 34 Stewarts Creek
- 35 Whitworth-Buchanan

Student Density

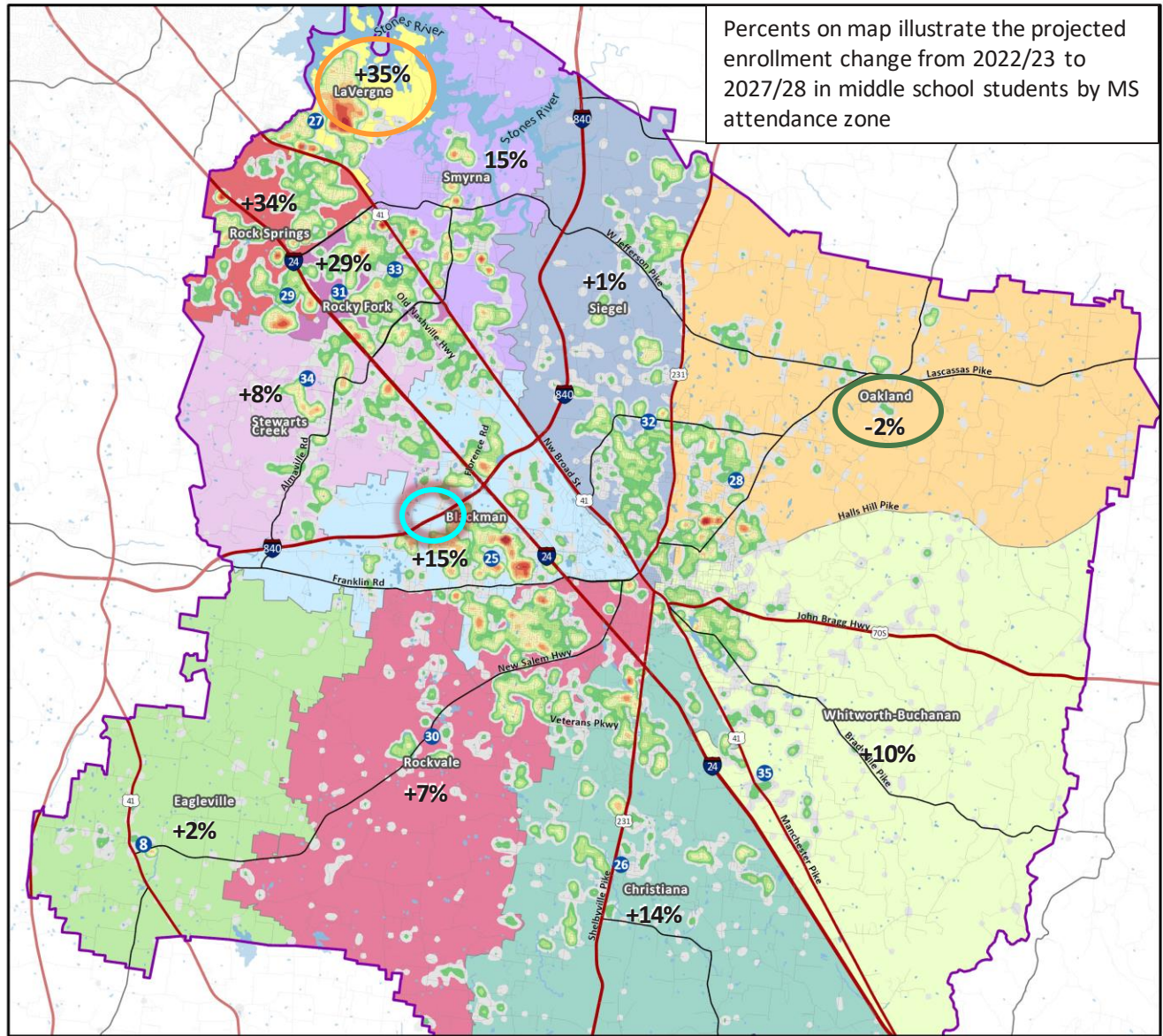
- Low Density
- High Density

 New Middle School

 Most growth

 Least growth

Percents on map illustrate the projected enrollment change from 2022/23 to 2027/28 in middle school students by MS attendance zone



Note: New facilities are potential sites based on district property owned in this region.

Map data provided by Rutherford County Schools, Cities of Eagleville, La Vergne, Murfreesboro, and Smyrna, Rutherford County, State of Tennessee, and ESRI/GIS.

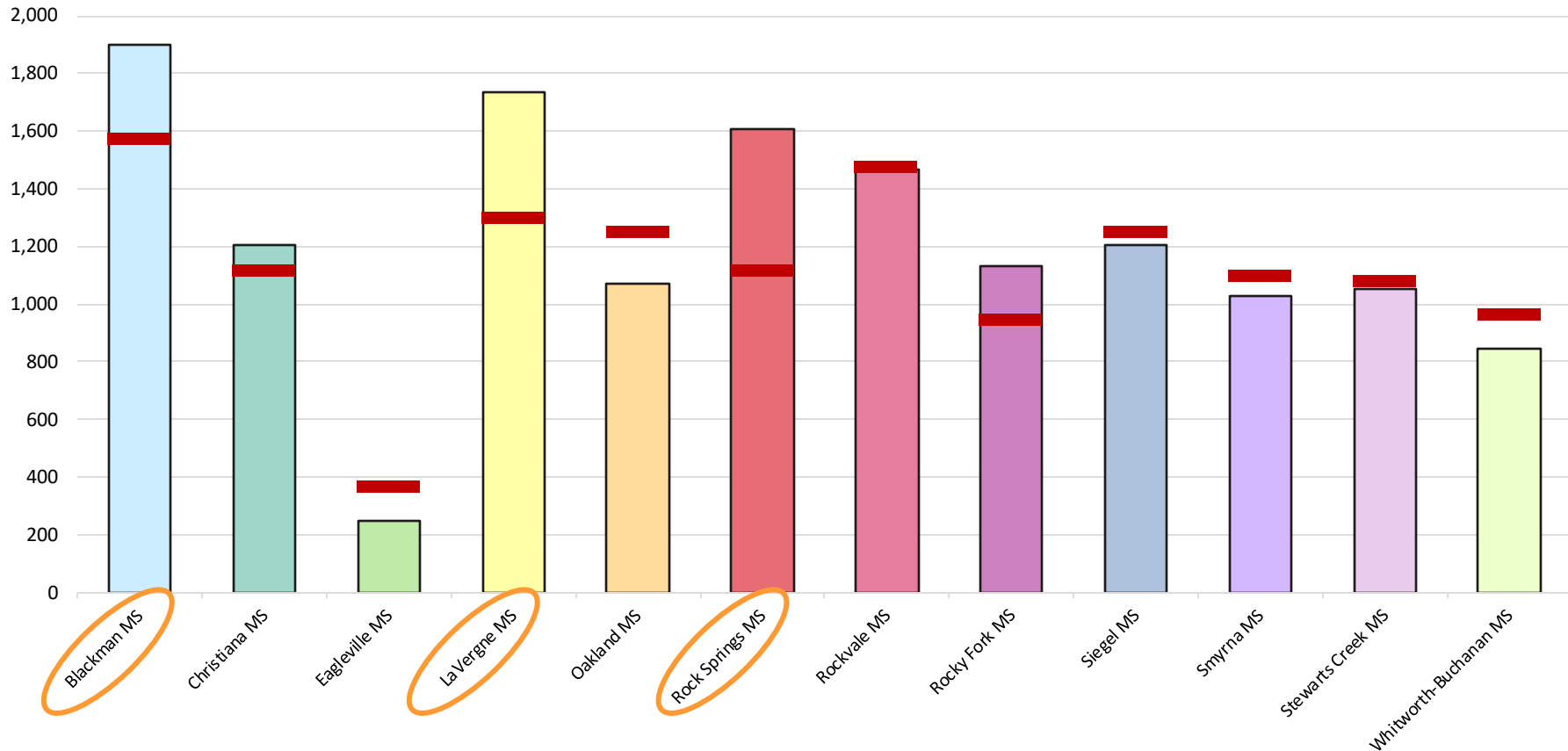
Map created by RSP & Associates in June 2023.



Middle School Forecasted Capacity Challenges

2027/28 Attend Projections and Current Functional Building Capacity

RSP Functional Capacity



Source: RSP & Associates, LLC - November 2022 (Updated May 2023)

Main Takeaway: Schools on the northwest side of the district are forecasted to grow at a higher rate over the next five years. The new middle school boundary should focus on relieving Blackman, LaVergne, and Rock Springs middle schools.

HS Heat Map and HS Attendance Zones

High School (9-12th) Student "Heat" Density by 2022/23 High School Attendance Zones

Legend

- Elementary Schools
- Middle Schools
- ◆ High Schools
- ◆ Magnet Schools
- ◆ Alternative Schools

High Schools

- 36 Blackman
- 8 Eagleville
- 37 Holloway
- 38 La Vergne
- 39 Oakland
- 40 Riverdale
- 41 Rockvale
- 42 Siegel
- 43 Smyrna
- 44 Stewarts Creek

Student Density

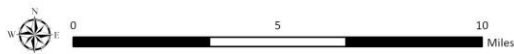
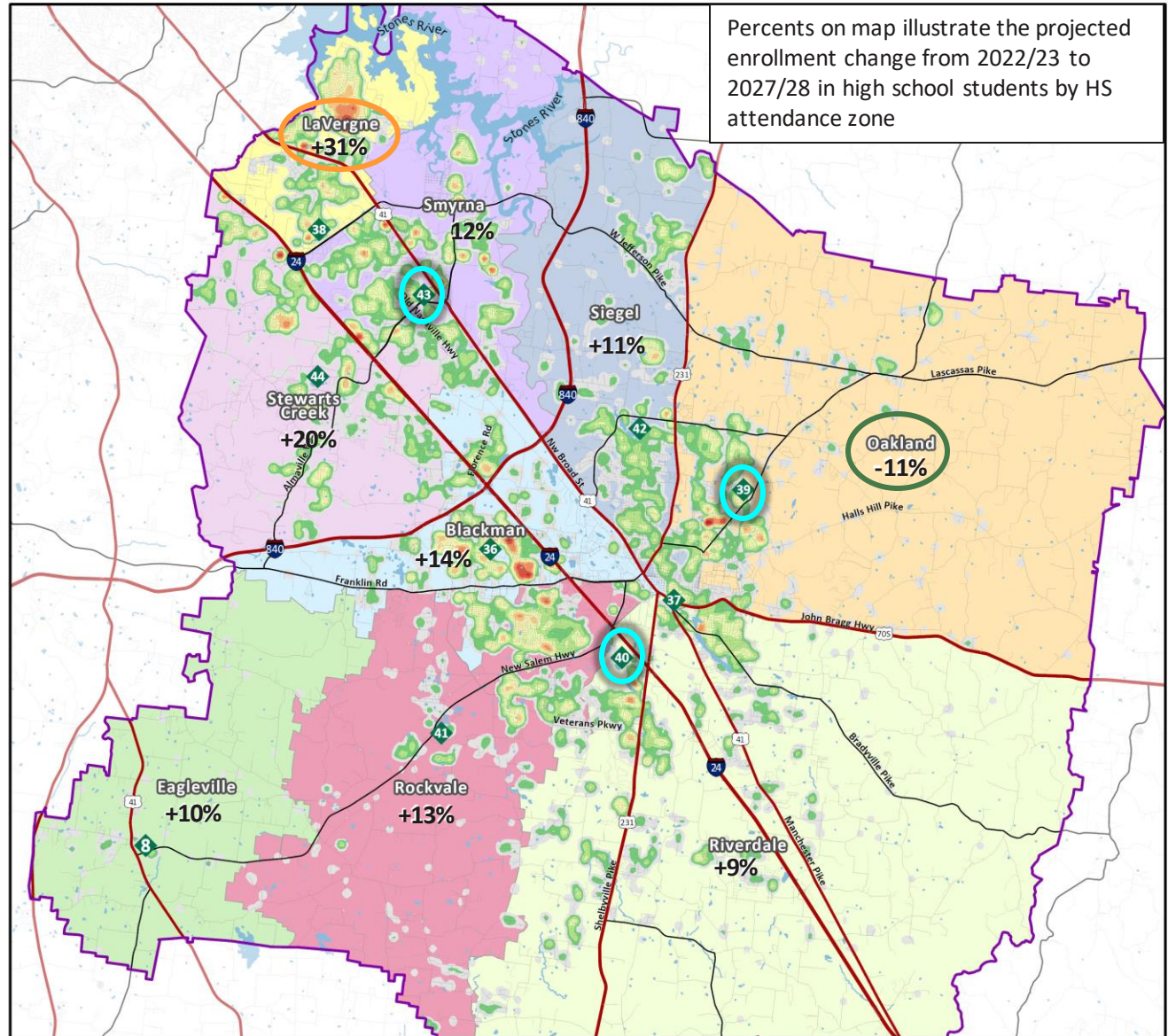
- Low Density
- High Density

 Facility Additions

 Most growth

 Least growth

Percents on map illustrate the projected enrollment change from 2022/23 to 2027/28 in high school students by HS attendance zone



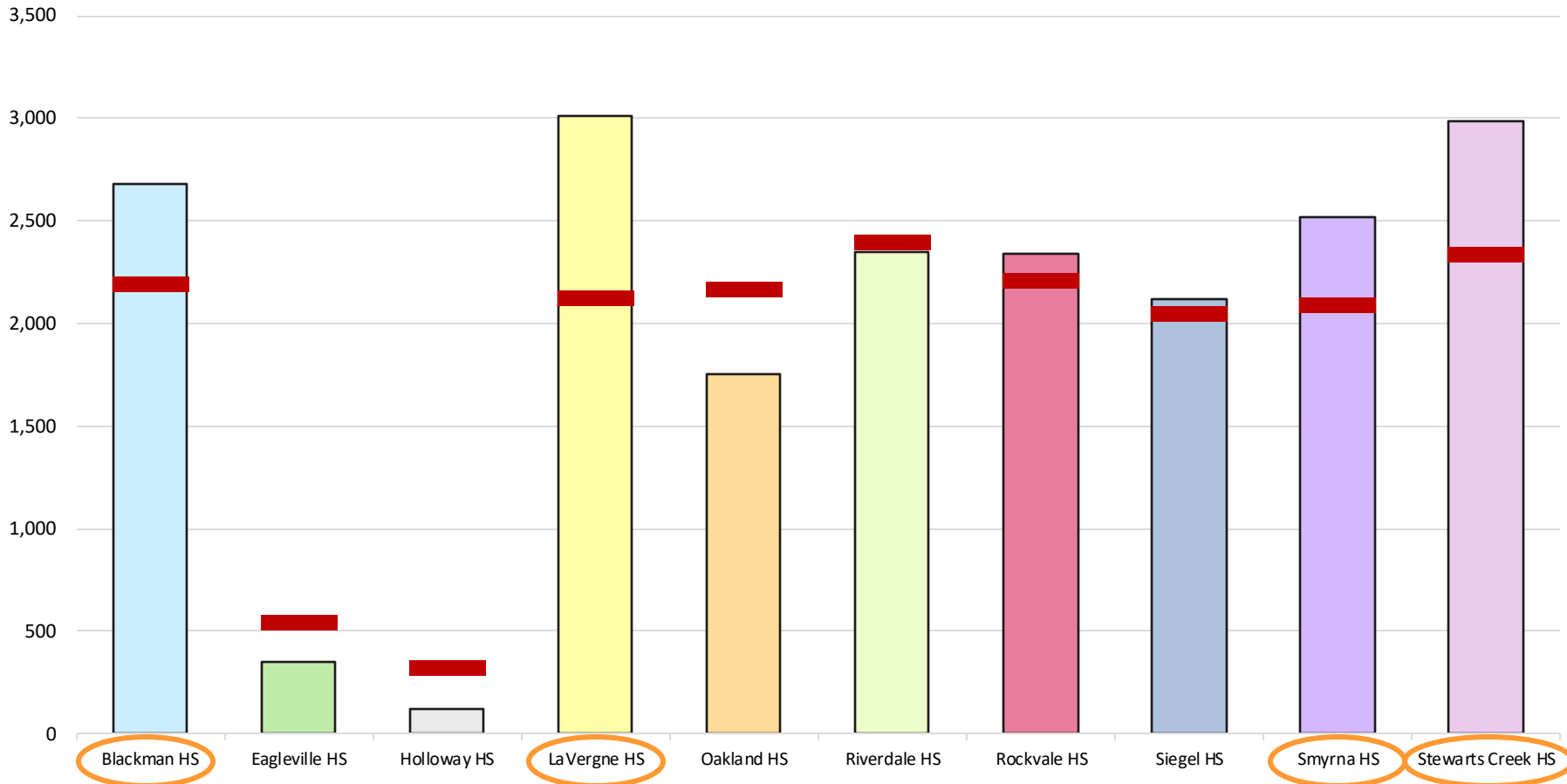
Map data provided by Rutherford County Schools, Cities of Eagleville, La Vergne, Murfreesboro, and Smyrna, Rutherford County, State of Tennessee, and ESRI/GIS.
Map created by RSP & Associates in June 2023.



High School Forecasted Capacity Challenges

2027/28 Attend Projections and Current Functional Building Capacity

RSP Functional Capacity



Source: RSP & Associates, LLC - November 2022 (Updated May 2023)

Main Takeaway: Schools on the northwest side of the district are forecasted to grow at a higher rate over the next five years. The building additions at Oakland, Riverdale, and Smyrna are receiving building additions will not fully resolve capacity challenges at the High School level.

Capacity Conversation

Elementary School	RSP Functional Capacity		District Past Capacity
	WO Port	W Port	
Barfield Elementary	970	1,020	867
Blackman Elementary	965	1,072	935
Brown's Chapel Elementary	835	835	918
Buchanan Elementary	495	528	459
Cedar Grove Elementary	925	942	935
Christiana Elementary	730	747	731
David Youree Elementary	770	853	731
Eagleville Elementary	432	432	425
Homer Pittard Campus	260	260	323
John Coleman Elementary	920	920	986
Kittrell Elementary	410	410	493
Lascassas Elementary	665	665	697
LaVergne Lake Elementary	1,010	1,060	935
McFadden School	465	465	374
Plainview Elementary	1,120	1,120	952
Rock Springs Elementary	1,265	1,265	1,411
Rockvale Elementary	1,585	1,585	1,258
Rocky Fork Elementary	990	990	1,071
Roy Waldron Elementary	1,425	1,425	1,496
Smyrna Elementary	750	816	799
Smyrna Primary	625	625	646
Stewarts Creek Elementary	1,115	1,173	952
Stewartsboro Elementary	855	855	952
Walter Hill Elementary	690	690	595
Wilson Elementary	855	885	935
Total	21,127	21,638	20,876

Source: RSP & Rutherford County Schools, 2022/23

Notes:

- Eagleville capacity is divided by grade configuration and programming
- Portables are assigned locations as of 2022/23 school year (about 160 portable classrooms)
- Schools that do not follow the K-5, 6-8, 9-12 grade configuration are not included in these tables

Middle School	RSP Functional Capacity		District Past Capacity
	WO Port	W Port	
Blackman Middle	1,525	1,568	1,635
Christiana Middle	1,108	1,108	925
Eagleville Middle	362	362	165
LaVergne Middle	1,296	1,296	1,635
Oakland Middle	1,244	1,244	1,566
Rock Springs Middle	1,065	1,109	1,140
Rockvale Middle	1,470	1,470	1,494
Rocky Fork Middle	937	937	1,150
Siegel Middle	1,130	1,246	1,047
Smyrna Middle	1,090	1,090	1,548
Stewarts Creek Middle	1,077	1,077	1,018
Whitworth-Buchanan	959	959	1,040
Total	13,263	13,466	14,363

Source: RSP & Rutherford County Schools, 2022/23

High School	RSP Functional Capacity		District Past Capacity
	WO Port	W Port	
Blackman High	2,150	2,189	2,266
Eagleville High	542	542	495
Holloway High	325	325	330
LaVergne High	2,015	2,119	2,134
Oakland High	2,152	2,165	2,500
Riverdale High	2,262	2,392	2,500
Rockvale High	2,074	2,204	2,310
Siegel High	2,049	2,049	2,244
Smyrna High	1,898	2,093	2,500
Stewarts Creek High	2,260	2,338	2,420
Total	17,727	18,416	19,699

Source: RSP & Rutherford County Schools, 2022/23

Capacity can vary from past reports due...

District past capacity:

- Utilizes a past class size ratio
- Incorporates all spaces that could be a classroom utilized as a classroom

RSP Functional Capacity

- Utilizes 2022/23 class size ratio
- Assigns capacity based on programming that is designated for that classroom (core, elective, other)

Main Takeaway: Building capacity was thoroughly reviewed by the district and RSP to identify ideal learning space for students. Many current facilities are over-utilized and are not providing the ideal learning environment.

Capacity Overview

NOTE: Capacity is based on RSP Functional Capacity (include portables). Click here for the full Capacity Analysis Report [\(NEED LINK\)](#)

Capacity of Current Facilities:

Elementary: 20,913 available capacity

- 2022/23 utilization is 82%
- *** Plainview ES and Eagleville campus are underutilized facilities.*
- 2027/28 projected utilization is 91%

Middle School: 13,466 available capacity

- 2022/23 utilization is 90%
- 2027/28 projected utilization is 108%

High School: 18,091 available capacity

- 2022/23 utilization is 96%
- 2027/28 projected utilization is 111%

Capacity including Future Facilities:

Elementary: 21,483 available capacity

- New school to add 1,100 to district capacity
- *** Repurposing for other district programming needs Roy Waldron Annex lowers total capacity.*
- 2027/28 projected utilization is 90%

Middle School: 14,666 available capacity

- New school to add 1,200 to district capacity
- 2027/28 projected utilization is 99%

High School: 18,941 available capacity

- Building additions to add 850 to district capacity
- 2027/28 projected utilization is 106%

District Plan to Address Capacity Challenges:

- New Elementary School (2025/26)
- New Middle School (2026/27)
- High School Additions at Oakland, Smyrna, and Siegel (2025/26)

Main Takeaway: More facility space is needed beyond the new facilities and building additions. The plan presented is not a long-term solution, but a step along the path to achieving ideal programming for the district.

CONCLUSION

- Enrollment is forecasted to continue growing over the next five years (+14%)
 - Larger elementary grades than high school grades
 - Positive cohort growth
 - Large in-migration of students
- Population and housing trends indicate future growth in the Rutherford County
 - Census forecasts growing population (population migration, positive number of live births)
 - New housing products
- Capacity reasoning:
 - Where facilities have space, may not be conducive with where students are located
 - Ideal capacity is between 75%-85% utilization in order to provide required educational programming
 - Future sites need to be strategically located
- Current school facilities cannot adequately serve the forecasted enrollment population (MORE FACILITY SPACE NEEDED)
 - Elementary facility utilization in 2027/28: 90%
 - Middle School facility utilization in 2027/28: 99%
 - High School facility utilization in 2027/28: 106%

An Attendance Area Re-Zoning is needed to:

1. Balance existing enrollment between **over-utilized schools** and **under-utilized schools**
2. Establish student enrollment at the NEW Elementary School and Middle School

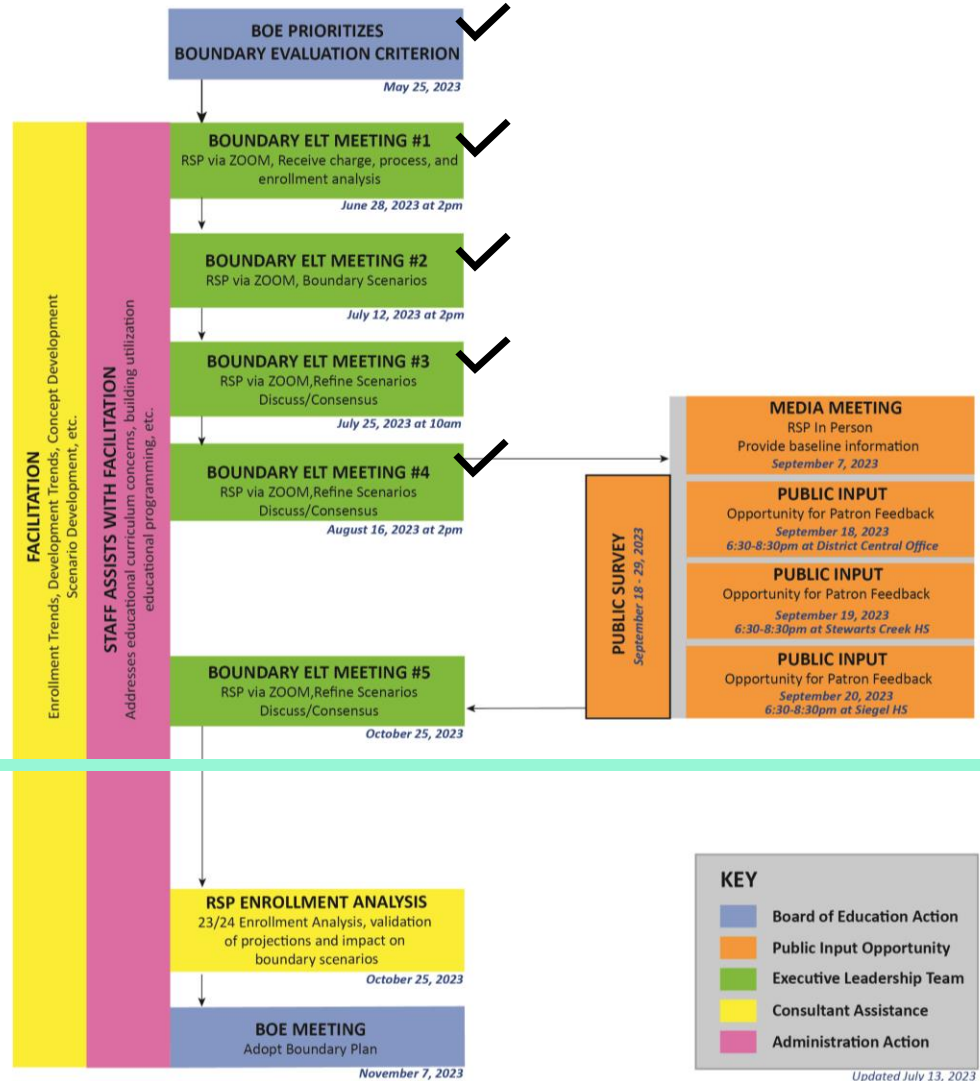
Part 3: Process Overview

Process Details

- **August-December 2022**
District enrollment analysis
- **December-April 2023**
District facility capacity analysis
- **May 2023**
Zoning analysis begins with BOE direction and administration input
- **June-August 2023**
Four Admin. Zoning Meetings are held to review attendance zone concepts
- **September 2023**
District seeks public input on the attendance zone concepts



2022/23 COMPREHENSIVE BOUNDARY PROCESS



Process Guiding Metrics



Academics

21st Century Learning
College & Career Ready
Relevant & Rigorous
Class Size
Enrollment/Capacity

Culture

Athletics & Activities
Clubs & Organizations
Student Engagement
Parent Involvement
Traditions/Pride
Safety



Economics

Repurpose of Schools
Remodeling/ Additions
New Construction
Bond Referendums
Community Support
Ability/Desire to Afford



Source: RSP

Boundary Criteria Prioritized:

1. Projected Enrollment/Building Utilization
2. Duration of Boundaries
3. Neighborhoods Intact
4. Demographic Considerations
5. Feeder System

Boundary Criteria Decision Matrix Table

Boundary Criteria (Alphabetical)	Ranking			
	1st	2nd	3rd	4th
1. Contiguous Attendance Areas	0	1	0	0
2. Demographic Considerations	1	1	0	0
3. Duration of Boundaries	3	1	0	0
4. Feeder System (Complete)	0	1	1	1
5. Fiscal Consideration - Capital	0	0	3	0
6. Fiscal Consideration - Operational	0	0	0	1
7. Neighborhoods Intact	1	0	2	3
8. Projected Enrollment/Building Utilization	2	3	0	1
9. Students Impacted by Boundary	0	0	1	1
10. Transportation Considerations	0	0	0	0
Total Responses	7	7	7	7

Source: RSP

Main Takeaway:

- ❑ ACE (Academics, Culture, Economics) keeps everyone focused on what matters
- ❑ Boundary Criteria provides the framework to analyze zoning concepts
- ❑ BOE prioritization establishes what the end result should consider to meeting district objectives

Scope of Work – Challenges

Most important challenges to be addressed in this process:

- Stewarts Creek Campus over-capacity challenges (ES, MS, HS)
- Blackman Campus over-capacity challenges (MS & HS)
- Roy Waldron Annex repurposed for other district programming need
- Plan for new elementary school opening in 2025/26
- Plan for new middle school opening in 2026/27
- Plan for High School building additions to be completed in 2025/26

Main Takeaway:

The zoning concepts presented as a transition to a long-term solution where additional capacity is added at each grade level. More district facility space is needed to achieve a long-term solution.

Part 4: Attendance Zone Concepts

Concept 1: Elementary Zoning Map

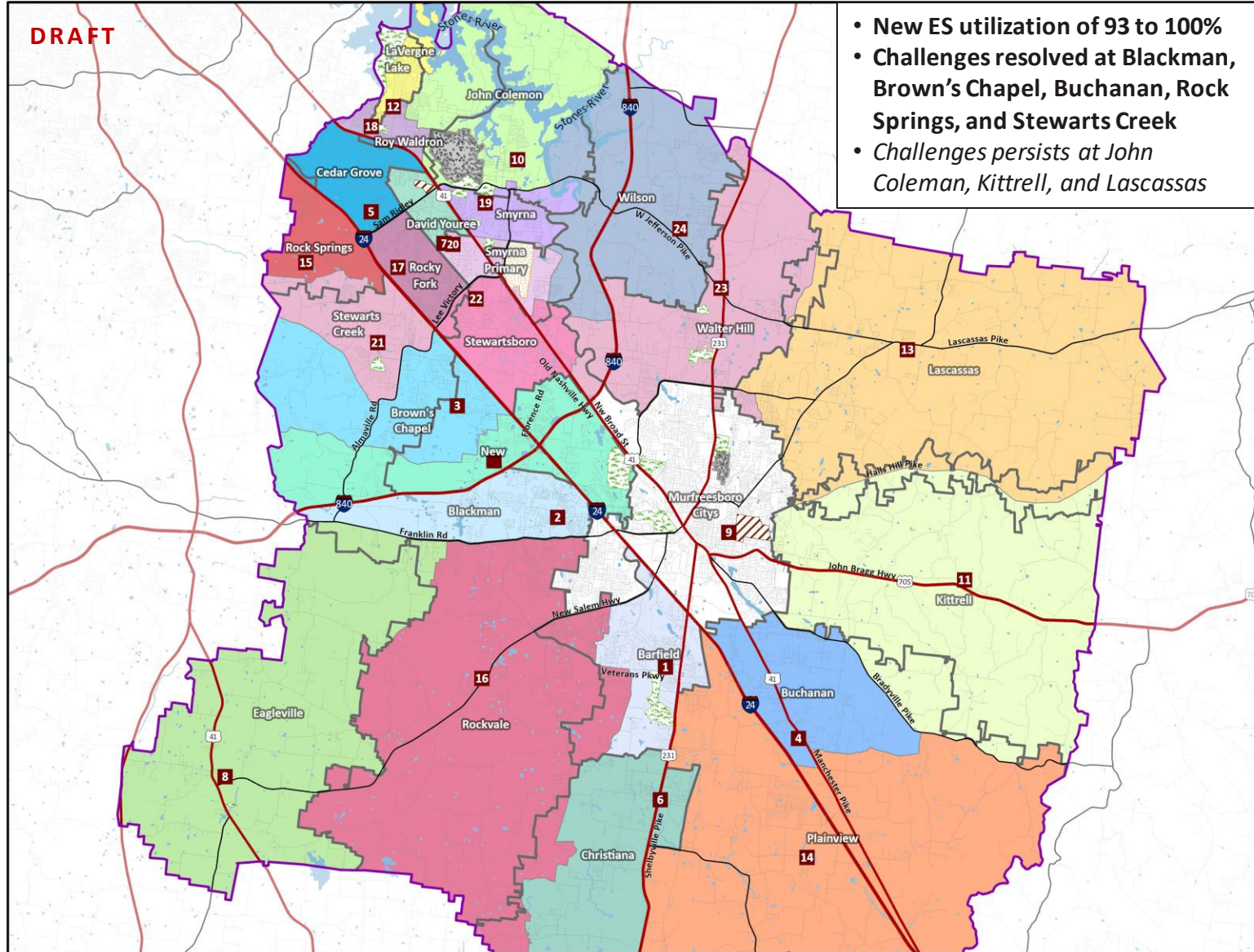
DRAFT

- New ES utilization of 93 to 100%
- Challenges resolved at Blackman, Brown's Chapel, Buchanan, Rock Springs, and Stewarts Creek
- Challenges persists at John Coleman, Kittrell, and Lascassas

Concept 1: Elementary School Boundary Map

- Elementary Schools
- Middle Schools
- ◆ High Schools
- Magnet Schools
- ◆ Alternative Schools
- Airport
- College
- Parks and Golf Courses
- Nissan Plant
- Current ES Boundary
- New Elementary & Middle School

- Elementary Schools**
- 1 Barfield
 - 2 Blackman
 - 3 Browns Chapel
 - 4 Buchanan
 - 5 Cedar Grove
 - 6 Christiana
 - 7 David Youree
 - 8 Eagleville
 - 9 Homer Pittard Campus
 - 10 John Coleman
 - 11 Kittrell
 - 12 La Vergne Lake
 - 13 Lascassas
 - 14 Plainview
 - 15 Rock Springs
 - 16 Rockvale
 - 17 Rocky Fork
 - 18 Roy Waldron
 - 19 Smyrna
 - 20 Smyrna Primary
 - 21 Stewarts Creek
 - 22 Stewartsboro
 - 23 Walter Hill
 - 24 Wilson
- * Murfreesboro Citys



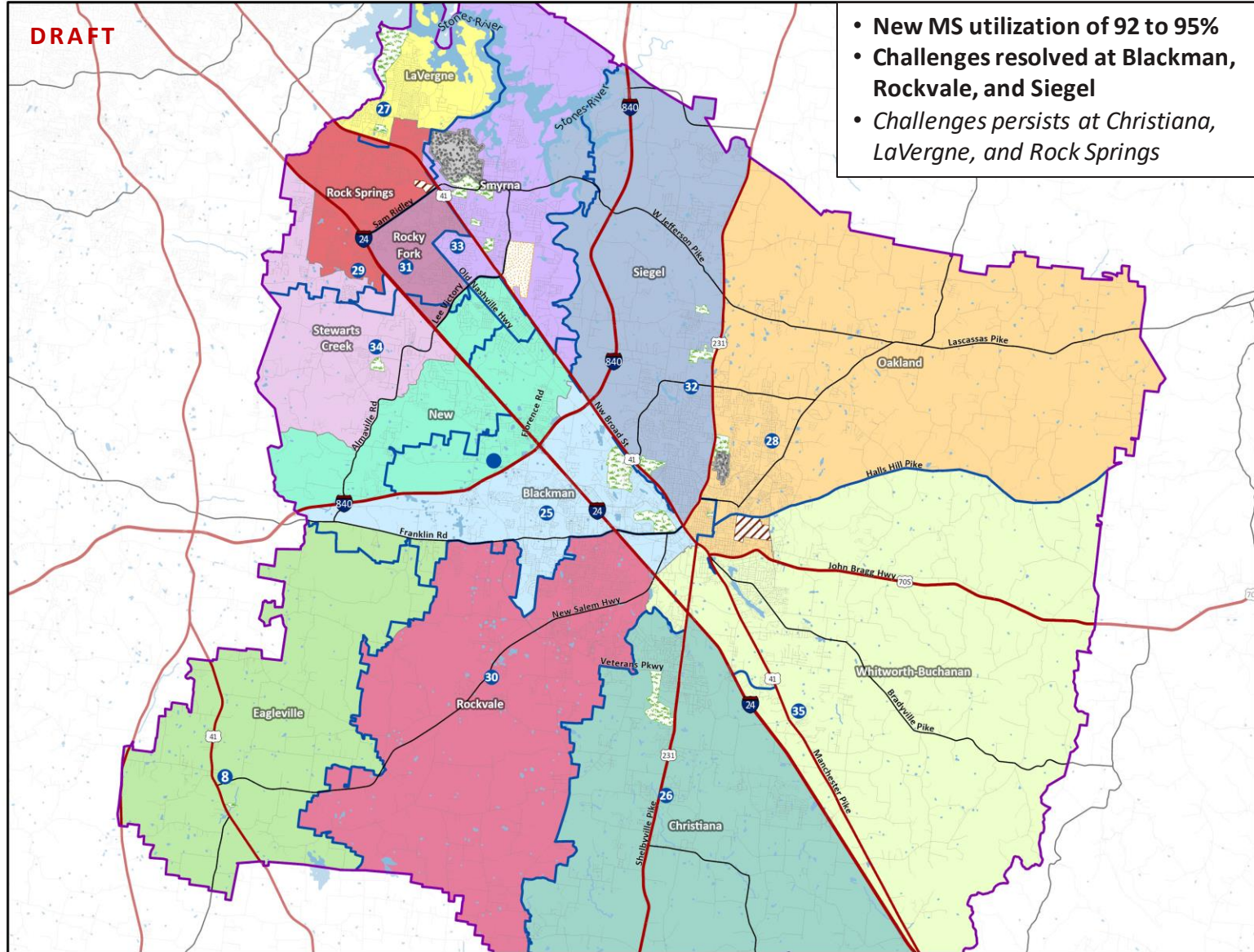
Elementary attendance zone change implemented in 2025/26 (when new ES opens)

Concept 1: Middle School Zoning Map

Concept 1: Middle School Boundary Map

- Elementary Schools
- Middle Schools
- ◆ High Schools
- Magnet Schools
- ◆ Alternative Schools
- Airport
- College
- Parks and Golf Courses
- Nissan Plant
- Current MS Boundary
- New Elementary & Middle School

- Middle Schools**
- 25 Blackman
 - 26 Christiana
 - 8 Eagleville
 - 27 La Vergne
 - 28 Oakland
 - 29 Rock Springs
 - 30 Rockvale
 - 31 Rocky Fork
 - 32 Siegel
 - 33 Smyrna
 - 34 Stewarts Creek
 - 35 Whitworth-Buchanan
- Magnet**
- 45 Central Magnet (6-12)
 - 47 Thurman Francis Arts Academy (K-8)
- Alternative**
- 48 Smyrna West Alternative (6-12)
 - 49 Daniel Mckee Alternative (6-12)



Map data provided by Rutherford County Schools, Cities of Eagleville, La Vergne, Murfreesboro, and Smyrna, Rutherford County, State of Tennessee, and ESRI/GIS.
Map created by RSP & Associates in August 2023.

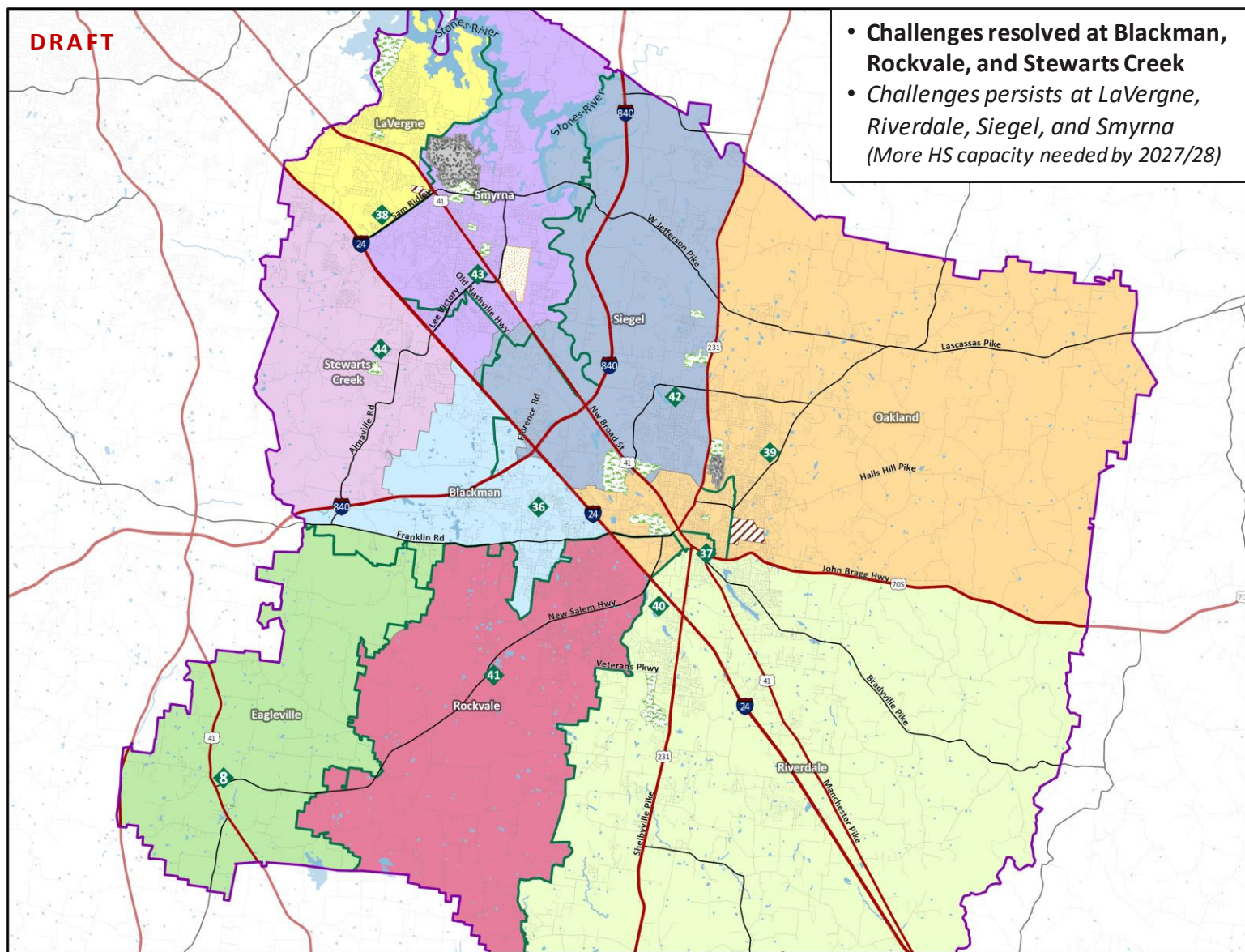
Middle school attendance zone change implemented in 2026/27 (when new MS opens)

Concept 1: High School Zoning Map

Concept 1: High School Boundary Map

- Elementary Schools
- Middle Schools
- ◆ High Schools
- Magnet Schools
- ◆ Alternative Schools
- Airport
- College
- Parks and Golf Courses
- Nissan Plant
- Current HS Boundary

- High Schools**
- 36 Blackman
 - 8 Eagleville
 - 37 Holloway
 - 38 La Vergne
 - 39 Oakland
 - 40 Riverdale
 - 41 Rockvale
 - 42 Siegel
 - 43 Smyrna
 - 44 Stewarts Creek
- Magnet**
- 45 Central Magnet (6-12)
- Alternative**
- 48 Smyrna West Alternative (6-12)
 - 49 Daniel Mckee Alternative (6-12)



- Challenges resolved at Blackman, Rockvale, and Stewarts Creek
- Challenges persists at La Vergne, Riverdale, Siegel, and Smyrna (More HS capacity needed by 2027/28)

Map data provided by Rutherford County Schools, Cities of Eagleville, La Vergne, Murfreesboro, and Smyrna, Rutherford County, State of Tennessee, and ESRI/GIS.
Map created by RSP & Associates in August 2023.

High school attendance zone change implemented in 2025/26 (when building additions are complete)

Concept 1 Zoning Projections

Concept #1: Elementary Reside Projections	Functional Capacity	Concept #1 Zoning Enrollment					
		2025/26		2026/27		2027/28	
		#	%	#	%	#	%
Barfield Elementary	1,020	844	83%	852	84%	851	83%
Blackman Elementary	1,072	1,067	100%	1,074	100%	1,051	98%
Brown's Chapel Elementary	835	749	90%	767	92%	775	93%
Buchanan Elementary	528	519	98%	532	101%	530	100%
Cedar Grove Elementary	942	835	89%	860	91%	865	92%
Christiana Elementary	747	672	90%	687	92%	697	93%
David Youree Elementary	853	783	92%	763	89%	765	90%
Eagleville Elementary	432	332	77%	332	77%	332	77%
John Coleman Elementary	920	958	104%	981	107%	953	104%
Kittrell Elementary	410	415	101%	419	102%	437	107%
Lascassas Elementary	665	672	101%	687	103%	695	105%
LaVergne Lake Elementary	1,060	926	87%	954	90%	950	90%
New Elementary	1,100	1,023	93%	1,066	97%	1,108	101%
Plainview Elementary	1,120	587	52%	601	54%	599	53%
Rock Springs Elementary	1,265	1,030	81%	1,050	83%	1,050	83%
Rockvale Elementary	1,585	1,165	74%	1,187	75%	1,229	78%
Rocky Fork Elementary	990	937	95%	911	92%	900	91%
Roy Waldron Elementary	895	813	91%	859	96%	881	98%
Smyrna Elementary	816	771	94%	763	94%	758	93%
Smyrna Primary	625	605	97%	616	99%	612	98%
Stewarts Creek Elementary	1,173	855	73%	872	74%	928	79%
Stewartsboro Elementary	855	773	90%	773	90%	767	90%
Walter Hill Elementary	690	608	88%	610	88%	602	87%
Wilson Elementary	885	666	75%	671	76%	681	77%
Total Facility	21,483	18,606	87%	18,887	88%	19,016	89%

Source: Rutherford County Schools, and RSP SFM, 2022/23

Note: Orange shading indicates when projected enrollment exceeds functional capacity (>100%). Projections are based on student reside and then adjusted for special programming facilities. Only schools with attendance zones are included on the tables.

Concept #1: Middle School Reside Projections	Functional Capacity	Concept #1 Zoning Enrollment			
		2026/27		2027/28	
		#	%	#	%
Blackman Middle	1,568	1,413	90%	1,430	91%
Christiana Middle	1,108	1,146	103%	1,160	105%
Eagleville Middle	362	179	50%	190	53%
LaVergne Middle	1,296	1,512	117%	1,589	123%
New Middle	1,200	1,093	91%	1,121	93%
Oakland Middle	1,244	1,148	92%	1,192	96%
Rock Springs Middle	1,109	1,132	102%	1,190	107%
Rockvale Middle	1,470	1,467	100%	1,434	98%
Rocky Fork Middle	937	923	99%	955	102%
Siegel Middle	1,246	1,181	95%	1,165	93%
Smyrna Middle	1,090	940	86%	1,003	92%
Stewarts Creek Middle	1,077	1,055	98%	1,084	101%
Whitworth-Buchanan Middle	959	937	98%	966	101%
Total Facility	14,666	14,126	96%	14,479	99%

Source: Rutherford County Schools, and RSP SFM, 2022/23

Concept #1: High School Reside Projections	Functional Capacity	Concept #1 Zoning Enrollment					
		2025/26		2026/27		2027/28	
		#	%	#	%	#	%
Blackman High	2,189	2,086	95%	2,090	95%	2,135	98%
Eagleville High	542	252	46%	247	46%	241	44%
LaVergne High	2,119	2,449	116%	2,700	127%	2,994	141%
Oakland High	2,500	2,322	93%	2,300	92%	2,279	91%
Riverdale High	2,500	2,538	102%	2,558	102%	2,663	107%
Rockvale High	2,204	2,151	98%	2,144	97%	2,221	101%
Siegel High	2,049	2,185	107%	2,258	110%	2,377	116%
Smyrna High	2,500	2,613	105%	2,615	105%	2,730	109%
Stewarts Creek High	2,338	2,123	91%	2,318	99%	2,491	107%
Total Facility	18,941	18,719	99%	19,230	102%	20,131	106%

Source: Rutherford County Schools, and RSP SFM, 2022/23

Main Takeaway:

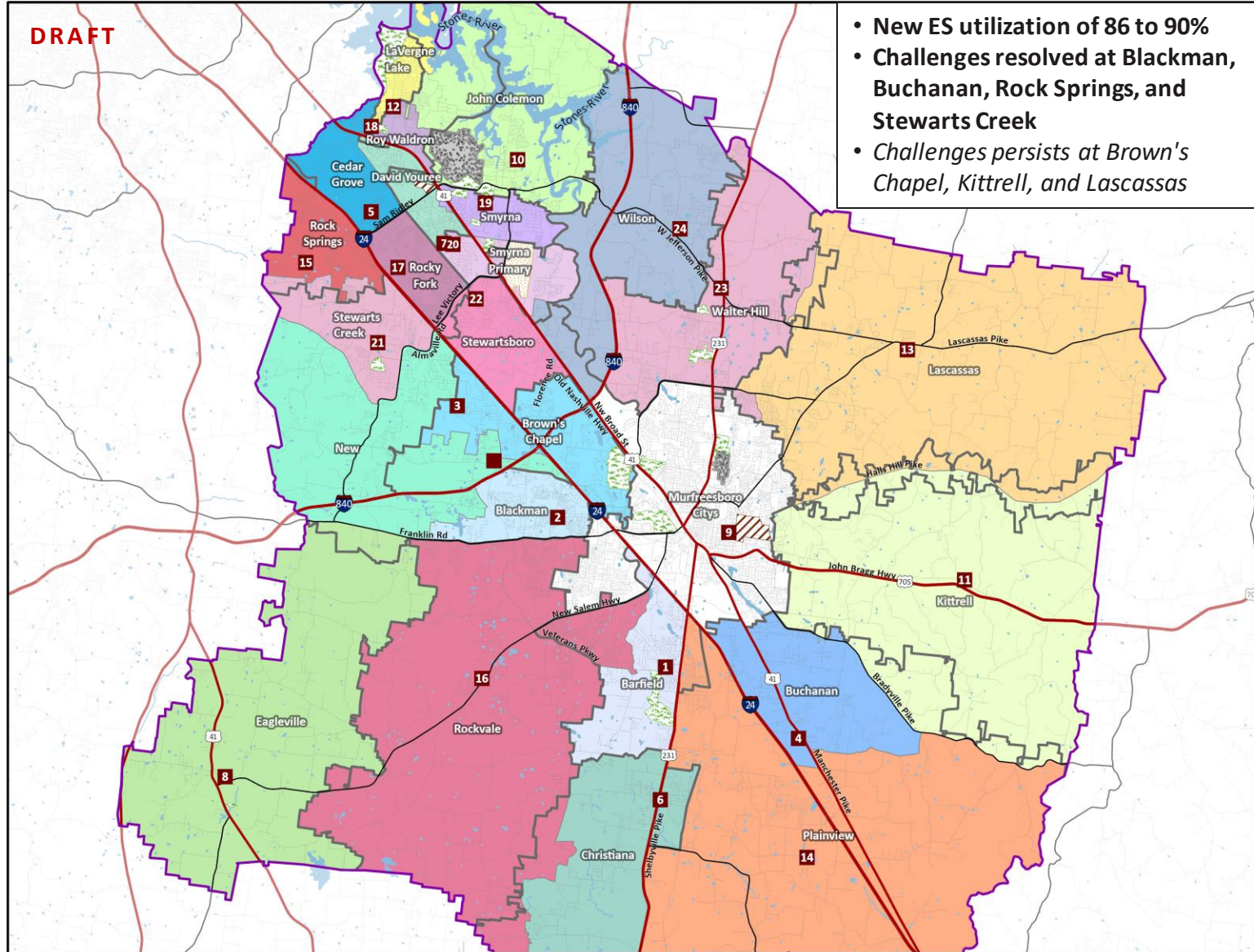
- Stewarts Creek Campus challenges are improved (Elementary, Middle, & High School)
- Blackman Campus challenges are improved (Middle & High School)
- Roy Waldron Annex is repurposed for other district programming need
- Plans for new elementary and middle school facilities and High School building additions

Concept 2: Elementary Zoning Map

Concept 2: Elementary School Boundary Map

- Elementary Schools
- Middle Schools
- ◆ High Schools
- Magnet Schools
- ◆ Alternative Schools
- Airport
- College
- Parks and Golf Courses
- Nissan Plant
- Current ES Boundary
- New Elementary & Middle School

- Elementary Schools**
- 1 Barfield
 - 2 Blackman
 - 3 Browns Chapel
 - 4 Buchanan
 - 5 Cedar Grove
 - 6 Christiana
 - 7 David Youree
 - 8 Eagleville
 - 9 Homer Pittard Campus
 - 10 John Coleman
 - 11 Kittrell
 - 12 La Vergne Lake
 - 13 Lascassas
 - 14 Plainview
 - 15 Rock Springs
 - 16 Rockvale
 - 17 Rocky Fork
 - 18 Roy Waldron
 - 19 Smyrna
 - 20 Smyrna Primary
 - 21 Stewarts Creek
 - 22 Stewartsboro
 - 23 Walter Hill
 - 24 Wilson
- * Murfreesboro Citys



- New ES utilization of 86 to 90%
- Challenges resolved at Blackman, Buchanan, Rock Springs, and Stewarts Creek
- Challenges persists at Brown's Chapel, Kittrell, and Lascassas

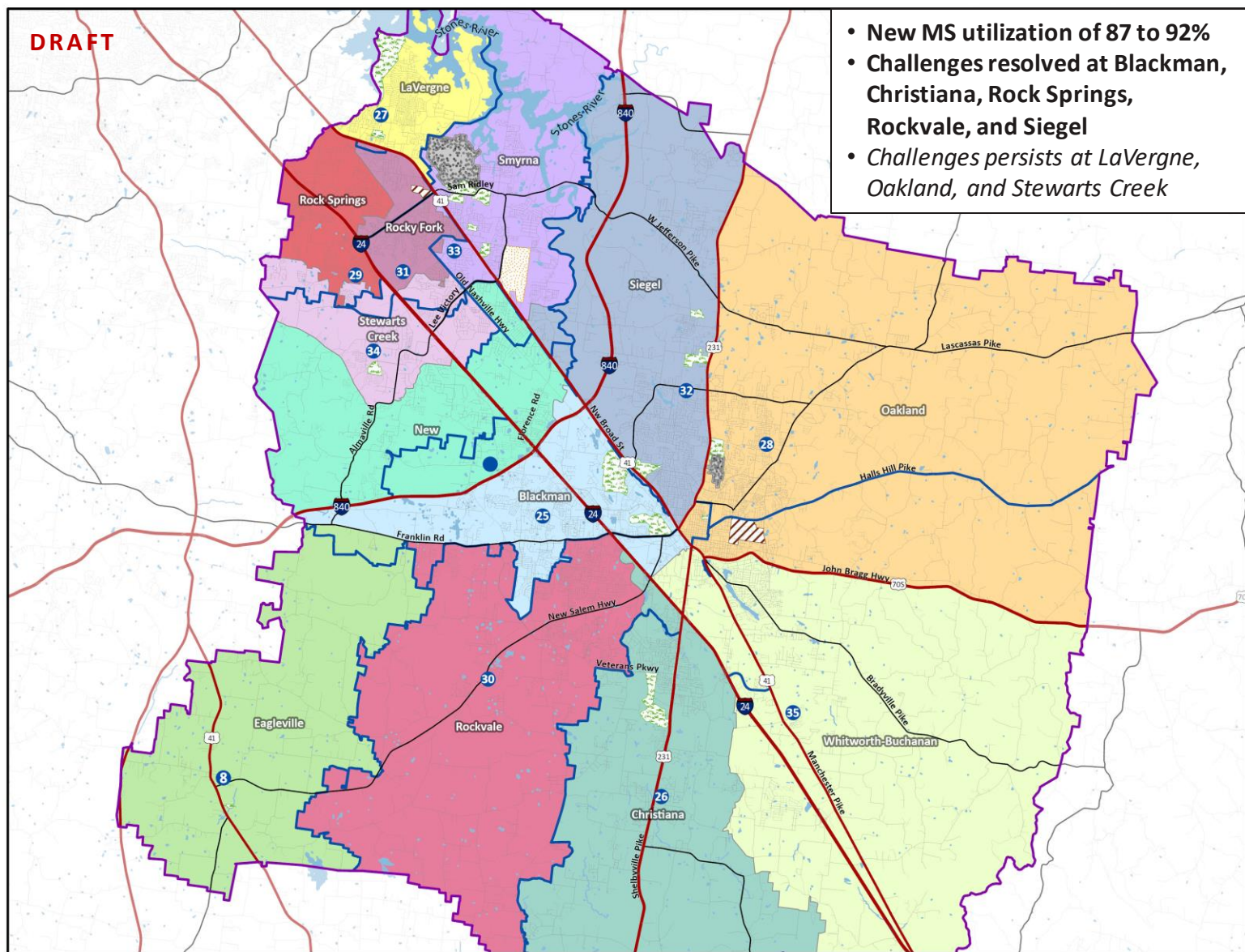
Elementary attendance zone change implemented in 2025/26 (when new ES opens)

Concept 2: Middle School Zoning Map

Concept 2: Middle School Boundary Map

- Elementary Schools
- Middle Schools
- ◆ High Schools
- Magnet Schools
- ◆ Alternative Schools
- Airport
- College
- Parks and Golf Courses
- Nissan Plant
- Current MS Boundary
- New Elementary & Middle School

- Middle Schools**
- 25 Blackman
 - 26 Christiana
 - 8 Eagleville
 - 27 La Vergne
 - 28 Oakland
 - 29 Rock Springs
 - 30 Rockvale
 - 31 Rocky Fork
 - 32 Siegel
 - 33 Smyrna
 - 34 Stewarts Creek
 - 35 Whitworth-Buchanan
- Magnet**
- 45 Central Magnet (6-12)
 - 47 Thurman Francis Arts Academy (K-8)
- Alternative**
- 48 Smyrna West Alternative (6-12)
 - 49 Daniel Mckee Alternative (6-12)



Map data provided by Rutherford County Schools, Cities of Eagleville, La Vergne, Murfreesboro, and Smyrna, Rutherford County, State of Tennessee, and ESRI/GIS.
 Map created by RSP & Associates in August 2023.

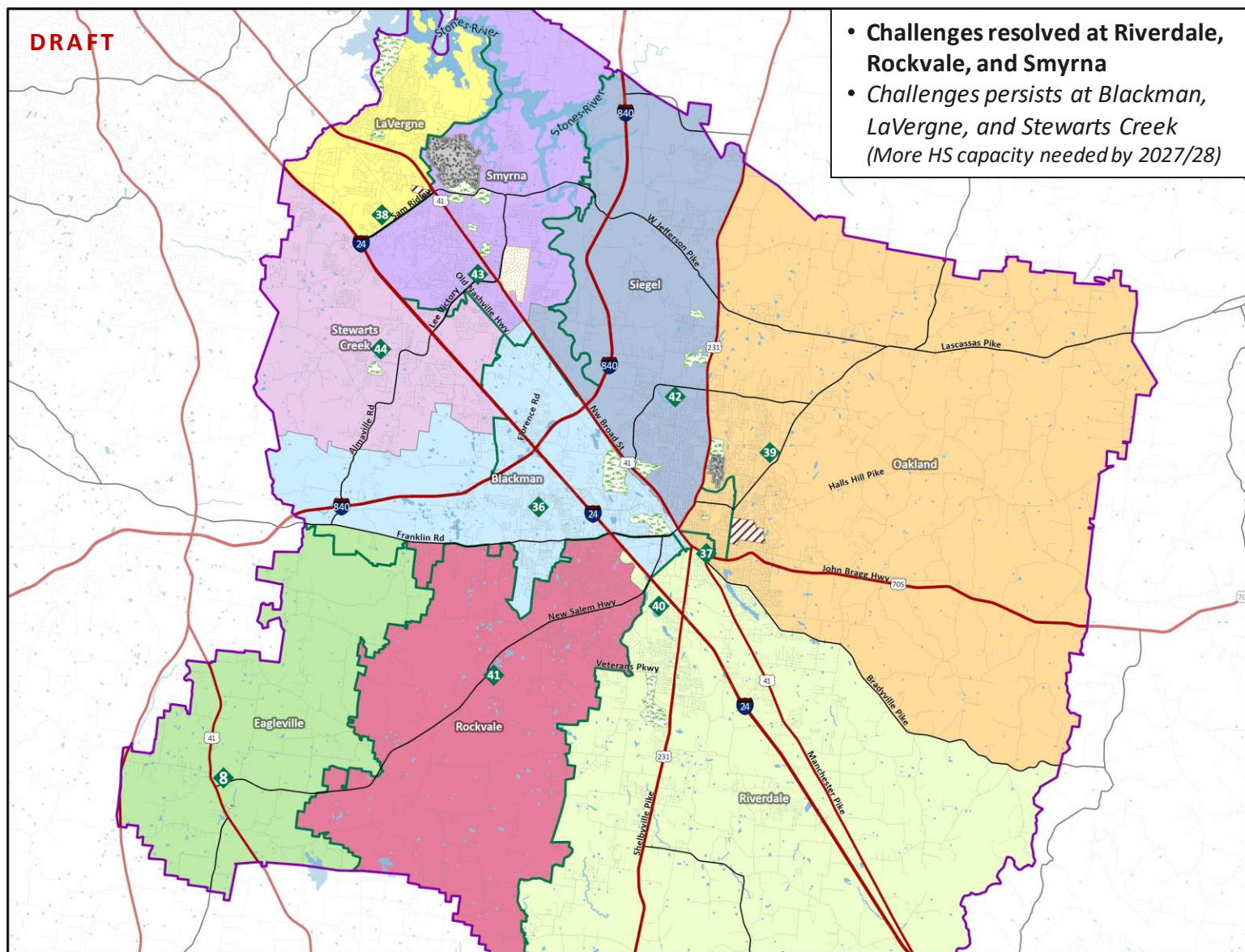
Middle school attendance zone change implemented in 2026/27 (when new MS opens)

Concept 2: High School Zoning Map

Concept 2: High School Boundary Map

- Elementary Schools
- Middle Schools
- ◆ High Schools
- Magnet Schools
- ◆ Alternative Schools
- Airport
- College
- Parks and Golf Courses
- Nissan Plant
- Current HS Boundary

- High Schools**
- 36 Blackman
 - 8 Eagleville
 - 37 Holloway
 - 38 La Vergne
 - 39 Oakland
 - 40 Riverdale
 - 41 Rockvale
 - 42 Siegel
 - 43 Smyrna
 - 44 Stewarts Creek
- Magnet**
- 45 Central Magnet (6-12)
- Alternative**
- 48 Smyrna West Alternative (6-12)
 - 49 Daniel Mckee Alternative (6-12)



- Challenges resolved at Riverdale, Rockvale, and Smyrna
- Challenges persists at Blackman, LaVergne, and Stewarts Creek (More HS capacity needed by 2027/28)

Map data provided by Rutherford County Schools, Cities of Eagleville, La Vergne, Murfreesboro, and Smyrna, Rutherford County, State of Tennessee, and ESRI/GIS.
Map created by RSP & Associates in August 2023.

High school attendance zone change implemented in 2025/26 (when building additions are complete)

Concept 2 Zoning Projections

Concept #2: Elementary Reside Projections	Functional Capacity	Concept #2 Zoning Enrollment					
		2025/26		2026/27		2027/28	
		#	%	#	%	#	%
Barfield Elementary	1,020	681	67%	671	66%	673	66%
Blackman Elementary	1,072	991	92%	1,001	93%	980	91%
Brown's Chapel Elementary	835	900	108%	943	113%	958	115%
Buchanan Elementary	528	519	98%	532	101%	530	100%
Cedar Grove Elementary	942	855	91%	889	94%	890	94%
Christiana Elementary	747	672	90%	687	92%	696	93%
David Youree Elementary	853	836	98%	818	96%	823	96%
Eagleville Elementary	432	311	72%	313	72%	313	72%
John Colemon Elementary	920	910	99%	935	102%	909	99%
Kittrell Elementary	410	415	101%	419	102%	437	107%
Lascassas Elementary	665	672	101%	687	103%	695	105%
LaVergne Lake Elementary	1,060	926	87%	954	90%	950	90%
New Elementary	1,100	949	86%	964	88%	997	91%
Plainview Elementary	1,120	693	62%	717	64%	712	64%
Rock Springs Elementary	1,265	1,082	86%	1,102	87%	1,104	87%
Rockvale Elementary	1,585	1,242	78%	1,272	80%	1,311	83%
Rocky Fork Elementary	990	937	95%	911	92%	900	91%
Roy Waldron Elementary	895	843	94%	886	99%	904	101%
Smyrna Elementary	816	814	100%	805	99%	799	98%
Smyrna Primary	625	593	95%	601	96%	602	96%
Stewarts Creek Elementary	1,173	736	63%	760	65%	810	69%
Stewartsboro Elementary	855	721	84%	719	84%	715	84%
Walter Hill Elementary	690	572	83%	573	83%	565	82%
Wilson Elementary	885	669	76%	674	76%	677	76%
Total	22,664	18,540	86%	18,833	88%	18,951	88%

Source: Rutherford County Schools, and RSP SFM, 2022/23

Note: Orange shading indicates when projected enrollment exceeds functional capacity (>100%). Projections are based on student reside and then adjusted for special programming facilities. Only schools with attendance zones are included on the tables.

Concept #2: Middle School Reside Projections	Functional Capacity	Concept #2 Zoning Enrollment			
		2026/27		2027/28	
		#	%	#	%
Blackman Middle	1,568	1,413	90%	1,430	91%
Christiana Middle	1,108	1,102	99%	1,114	101%
Eagleville Middle	362	169	47%	180	50%
LaVergne Middle	1,296	1,617	125%	1,704	131%
New Middle	1,200	1,053	88%	1,108	92%
Oakland Middle	1,244	1,298	104%	1,339	108%
Rock Springs Middle	1,109	956	86%	1,043	94%
Rockvale Middle	1,470	1,477	100%	1,445	98%
Rocky Fork Middle	937	912	97%	938	100%
Siegel Middle	1,246	1,196	96%	1,188	95%
Smyrna Middle	1,090	970	89%	1,030	94%
Stewarts Creek Middle	1,077	1,131	105%	1,094	102%
Whitworth-Buchanan Middle	959	831	87%	868	91%
Total Facility	14,666	14,125	96%	14,481	99%

Source: Rutherford County Schools, and RSP SFM, 2022/23

Concept #2: High School Reside Projections	Functional Capacity	Concept #2 Zoning Enrollment					
		2025/26		2026/27		2027/28	
		#	%	#	%	#	%
Blackman High	2,189	2,789	127%	2,825	129%	2,935	134%
Eagleville High	542	242	45%	237	44%	229	42%
LaVergne High	2,119	2,449	116%	2,700	127%	2,994	141%
Oakland High	2,500	2,449	98%	2,430	97%	2,418	97%
Riverdale High	2,500	2,047	82%	2,068	83%	2,165	87%
Rockvale High	2,204	2,161	98%	2,154	98%	2,232	101%
Siegel High	2,049	1,815	89%	1,849	90%	1,916	94%
Smyrna High	2,500	2,258	90%	2,298	92%	2,407	96%
Stewarts Creek High	2,338	2,511	107%	2,669	114%	2,833	121%
Total Facility	18,941	18,721	99%	19,230	102%	20,129	106%

Source: Rutherford County Schools, and RSP SFM, 2022/23

Main Takeaway:

- Stewarts Creek Elementary challenges are improved; Middle & High School remain over-utilized
- Blackman Middle School challenges are improved; High School remains over-utilized
- Roy Waldron Annex is repurposed for other district programming need
- Plans for new elementary and middle school facilities and High School building additions

Concept Student Data Comparison/Discussion

Concept 1	Concept 2
<p>Challenges resolved at:</p> <p>Elementary</p> <ul style="list-style-type: none"> • Blackman • Brown’s Chapel • Buchanan • Rock Springs • Stewarts Creek <p>Middle School</p> <ul style="list-style-type: none"> • Blackman • Rockvale • Siegel 	<p>Challenges resolved at:</p> <p>Elementary:</p> <ul style="list-style-type: none"> • Blackman • Buchanan • Rock Springs • Stewarts Creek <p>Middle School</p> <ul style="list-style-type: none"> • Blackman • Christiana • Rockvale • Siegel
<p><i>Challenges persist at:</i></p> <p><i>Elementary</i></p> <ul style="list-style-type: none"> • John Coleman • Kittrell • Lascassas <p><i>Middle School</i></p> <ul style="list-style-type: none"> • Christiana • LaVergne • Rock Springs 	<p><i>Challenges persist at:</i></p> <p><i>Elementary</i></p> <ul style="list-style-type: none"> • Brown's Chapel • Kittrell • Lascassas <p><i>Middle School</i></p> <ul style="list-style-type: none"> • LaVergne • Oakland • Rock Springs
<ul style="list-style-type: none"> • High School capacity challenges persist at LaVergne, Riverdale, Siegel, and Smyrna high schools • More High School capacity is needed to fully resolve challenges • More K-2nd grade students impacted (17.4%) 	<ul style="list-style-type: none"> • High School capacity challenges persist at Blackman, LaVergne, and Stewarts Creek high schools • More High School capacity is needed to fully resolve challenges • Less K-2nd grade students impacted (14.8%)

Main Takeaway:

There are many differences between the concepts that may be positives or negatives depending on one’s lens. Neither concept is a long-term solution that solves all the utilization challenges in the district. **More facility space is needed at all levels to provide the best educational learning environment for students.**

Public Input Participation


Small Group Stations

At each station (6 total throughout the room):

- ❑ Large maps for Concept 1 and Concept 2 (6 total maps)
 - Solid colors represent the concept attendance zone
 - Solid line represent the current attendance zone
 - When an attendance zone extends past the solid line, this indicates where there is a change in the attendance zone
- ❑ Enrollment projection table on top left of map
 - Important to note when each attendance zone adjusted is planned to go into affect– the projection numbers will be impacted starting that year (Elementary: 2025/26, Middle School: 2026/27, High School: 2025/26)
- ❑ District administration and RSP representatives will be at different stations to answer questions and direct feedback

Submit feedback three ways:

1. Written on large notepads at each station
2. Verbal communication with district administration personnel
3. Electronic via the survey

 NOTE: The survey is the best way to submit feedback on concept preference.

MetroQuest Survey

1. Welcome

- Overview of project
- Fast facts of facility and enrollment

2. Elementary Solution

- Three tabs: current zone map, concept 1 zone map, concept 2 zone map
- 4th tab: survey questions

3. Middle School Solution

- Three tabs: current zone map, concept 1 zone map, concept 2 zone map
- 4th tab: survey questions

4. High School Solution

- Three tabs: current zone map, concept 1 zone map, concept 2 zone map
- 4th tab: survey questions

5. Wrap-Up

- Final facility question
- Demographic questions

- ✓ Survey Opens: September 18th
- ✓ Survey Closes: September 29th

RCS Attendance Zone Adjustments More at: <https://www.rcschools.net/>

1 2 3 4 5 **Finish the Survey**
Tell us a bit about yourself. Please click finish when you are done.

Final Questions

> There is not a long-term zoning solution until more facilities are added to the district.

> I am a (select all that apply):
 Community member
 Parent of current student
 Parent of former student
 RCS staff member

> What high school zone do you currently reside in?
Select...

> How would you describe your race?
Select...




> Are you of Hispanic, Latino, or Spanish origin/ethnicity?
Select...

Answer the questions you want to, then click Finish:

Thank You!

Thank you for participating in our survey. Your feedback is valuable to the District.

Please share this with others and help us get everyone involved!

Insert QR Code

Next Steps

ELT Meeting: Oct. 25

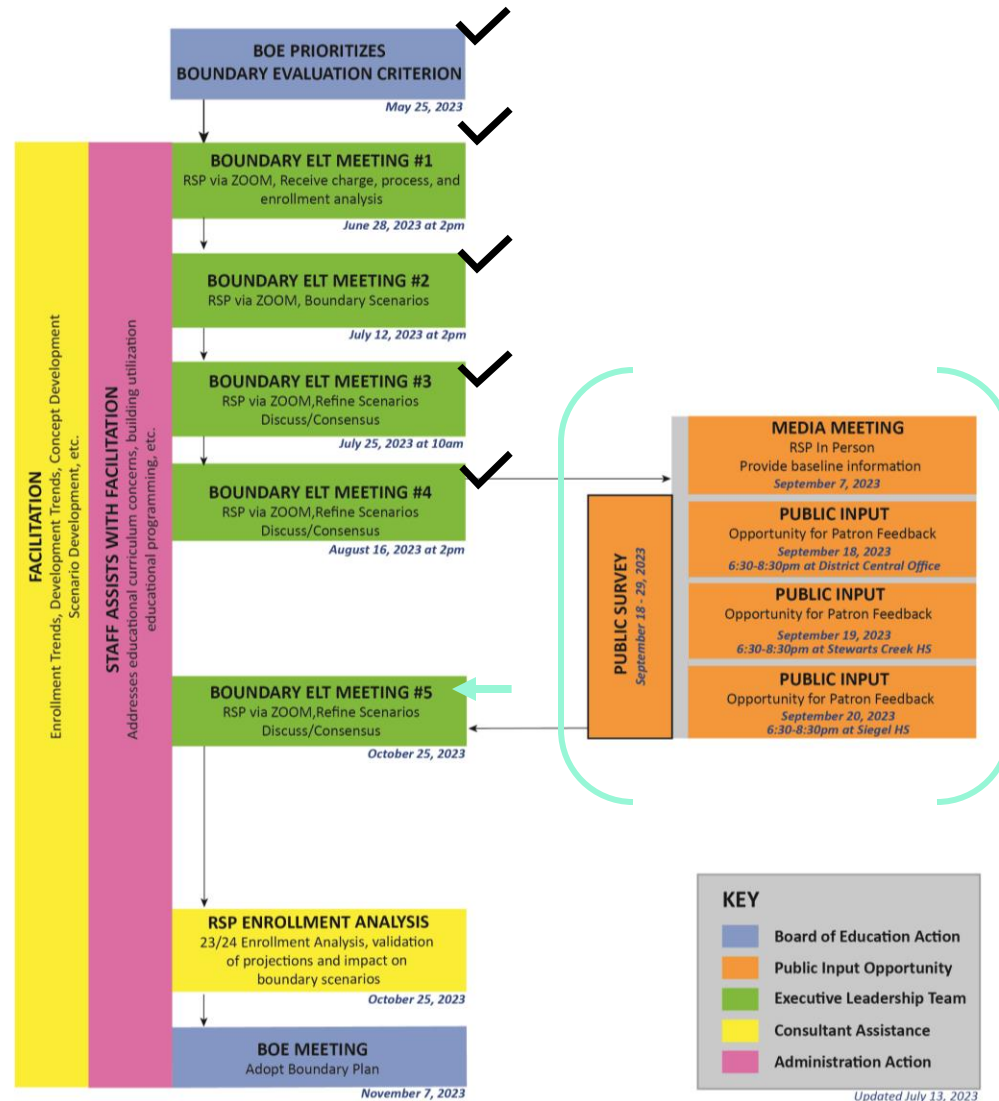
- Results from public input guide the next District ELT meeting and potential changes to zone adjustment proposal
- New Enrollment Analysis study with 2023/24 enrollment may result in small changes to zone adjustment proposal

Board of Education: Nov. 7

- Potential adoption of zone adjustment proposal



2022/23 COMPREHENSIVE BOUNDARY PROCESS



Key Takeaways

- Enrollment growth over the next five years (+14% district-wide)
- Facility capacity challenges
 - Where facilities have space, may not be conducive with where students are located
 - Ideal capacity is between 75%-85% utilization to provide required educational programming
 - Future sites need to be strategically located
- New Elementary School opening 2025/26
- New Middle School opening in 2026/27
- High School building additions in 2025/26
 - Oakland High School
 - Riverdale High School
 - Smyrna High School
- District will need to plan for new facilities at each grade level to meet projected district enrollment growth
- Two zoning adjustment concepts will be presented for public discussion
 - The zoning concepts presented as a transition to a long-term solution where additional capacity is added at each grade level. More district facility space is needed to achieve a long-term solution.
- Community will provide their input via public survey
 - Opens September 18th
 - Closes September 29th